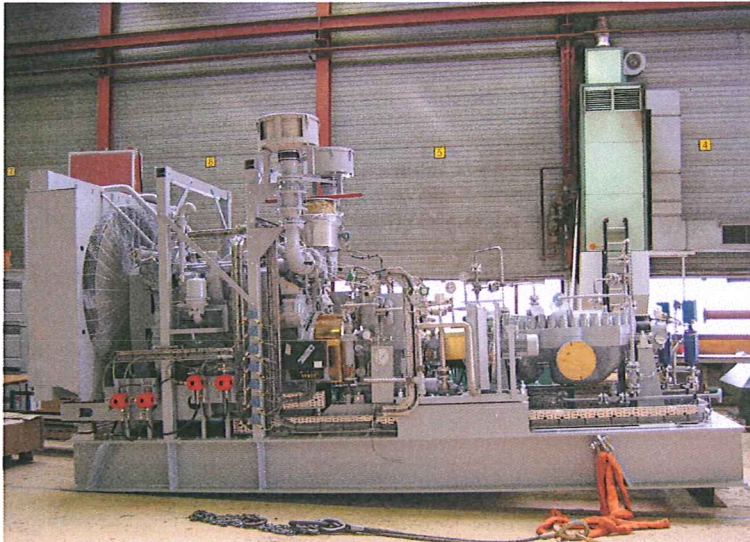


## GSPL Augmentation project: Mainline Pumping Units



↑ Mainline Pumping unit



↑ Fuel Oil Day tank



↑ Local Control Panels

**Customer:** Ruhrpumpen GmbH / Indian Oil Corporation Ltd.

**Application:** Mainline Pumping Units

**Year:** 2007

**Delivery:** 3x Caterpillar 3508 diesel engine driven pump packages, including local control panels, diesel fuel day tanks and starting air receivers.

**Power:** Engine power: 440 BkW at 1200 rpm  
Pump performance: flow 210 m<sup>3</sup>/hr, head 480m at 3114 rpm

**Remarks:** Designed and built to operate in hazardous area (Class I, Div. I & II, Group C&D gasses as per API RP-500C) and ambient temperatures up to 50° C.