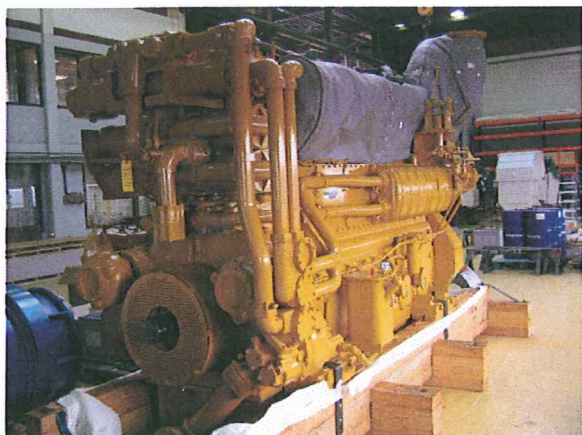


NAM L2-FA-1 COMPRESSION PROJECT



Customer: Nederlandse Aardolie Maatschappij B.V. (NAM)

Application: Compressor Drive

Year: 2008

Location: Northsea, Netherlands

Delivery: 1 x Caterpillar G3606 gas engine for compression drive

Power: 1 x 1324 BkW; 1000 rpm

Remarks: Engine drives from damper side a Thomassen Compression Systems CHS-4 type compressor. Compression package aims at maximizing reserves recovery, hence lowering the suction pressure as much as it is economically possible.