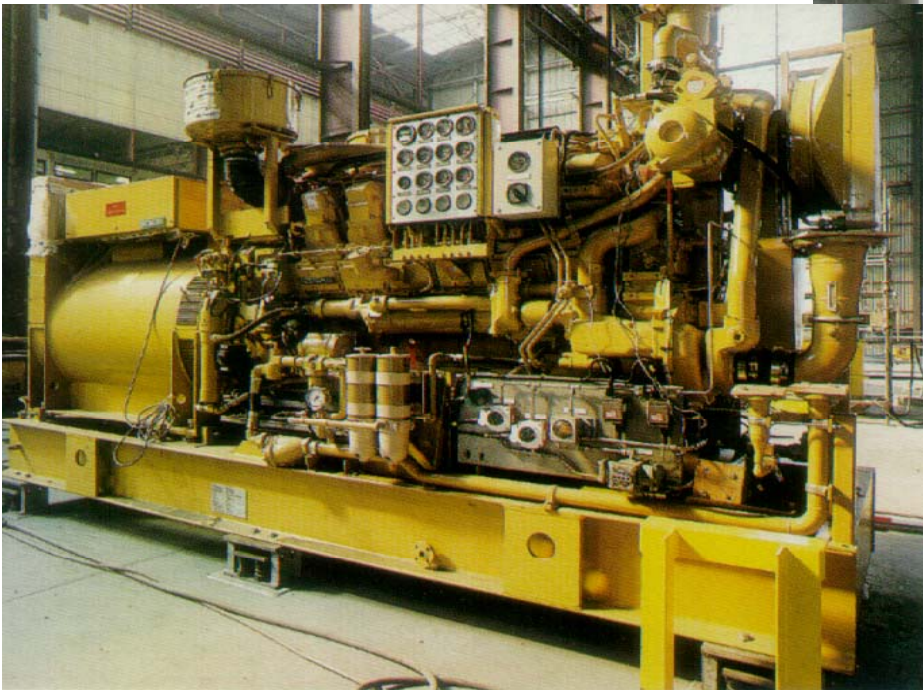


NAM L9 Gas Production Rig: Prime & Emergency Power



(Above) production of the NAM L9 Gas Production Rig

(Left) One of the 4 gensets for the L9

Customer:	NAM
Application:	Prime & emergency power generation on gas production rig
Year:	1997
Delivery:	2 x G3516 SITA Caterpillar gas gensets and 2 x 3512 DITA Caterpillar diesel gensets
Performance:	4 x 1250 kVA at 1000 rpm
Remarks:	G3500 engines are lean burn and standard capable of running on gas with methane number 40-45. EIS Detonation control and Deltec Lambda control. Use of exhaust gasses for preheating of an HVAC installation.
Customer Quote:	<p>"...Thanks for the 2.5 weeks ahead of planned target date"</p> <p>"The Caterpillars are at the top of the range very reliable, we look at all aspects of operations and with Caterpillar we achieve a very profitable total cost of ownership"</p>