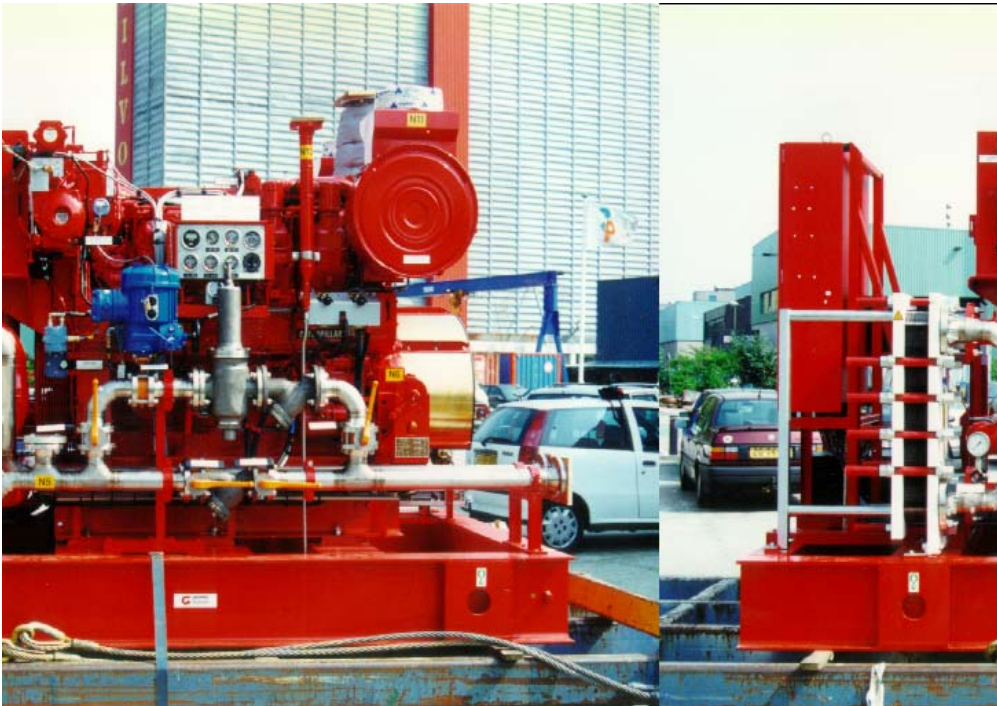


Sture Terminal: Sea Water Circulation Pump



3508 DITA diesel engine driver for sea water circulation pump

| | |
|---------------------|--|
| Customer: | Norsk Hydro Produksjon AS / Raytheon Engineers & Constructors |
| Application: | Sea water circulation pump |
| Year: | 1999 |
| Delivery: | 1 x 3508 DITA Caterpillar diesel engine as a driver for a two stage IDP centrifugal pump |
| Power: | 752 kW at 1800 rpm |
| Performance: | 1500 m ³ / hr at 1485 rpm with reduction gear |
| Dimensions: | 3,7 x 2 x 2,4 m (LxWxH) |
| Weight: | 24 tons |
| Remarks: | 254 SMO cool water piping and appendages, titanium heat exchanger, Fisher Ex- instrumentation, Metron Eledyne controller, designed according NFPA20 & Norsok |