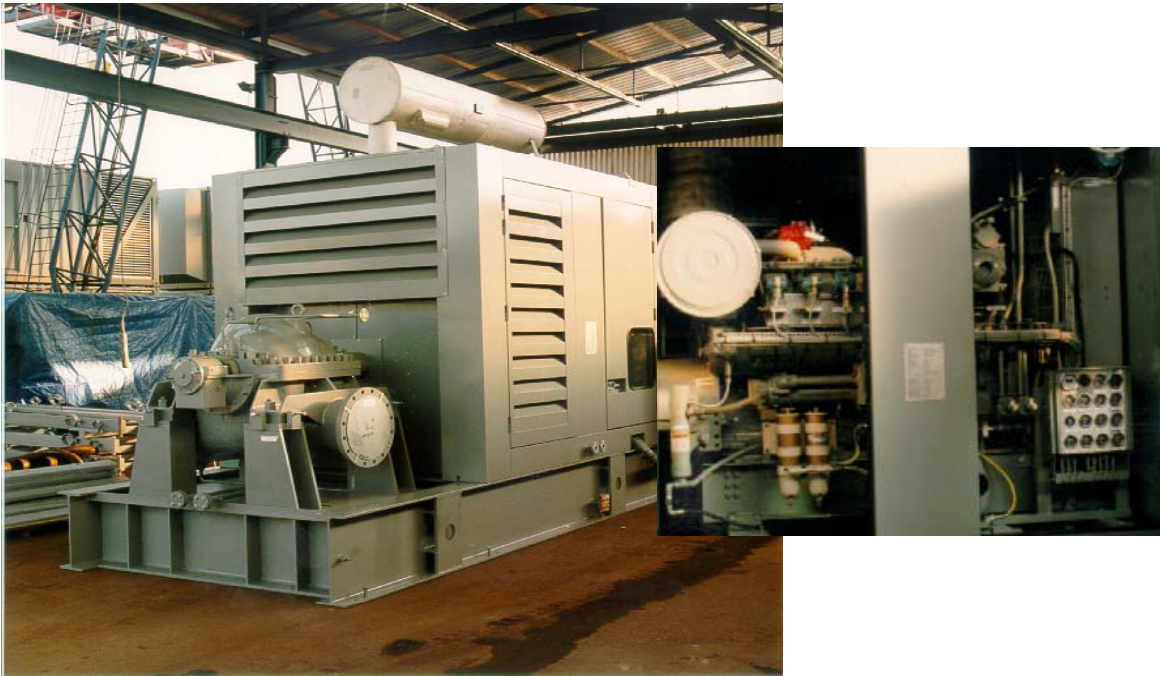


Seraya Chemicals Singapore (Pte) Ltd. Emergency Cooling Water Pump



Customer:	Seraya Chemicals Singapore (Pte) Ltd.	
Application:	Emergency Cooling Water Pump	
Year:	2001	
Delivery:	3508 DITA Caterpillar diesel engine packaged with SM 402-570 Sulzer Pump. Engine built in a sound attenuated and weather enclosure 94 dB(A) @ 1m	
Power Rating:	engine	565 kW at 1200 rpm
	water flow	2500 m ³ /hr
	npsh	5,5 m
Measurements:	L x W x H: 5,7 x 2,4 x 4,3 m - weight: 17.100 kg	
Remarks:	Delivery included 7,6 m ³ horizontal fuel tank, skid mounted Control Panel, NiCad batteries, Fisher Rosemount pressure, temperature and level transmitters	