



Cat[®] TH406

Telehandler

Specifications

Engine

Model	
Standard	Cat [®] C4.4 DITAAC
Optional	Cat [®] C4.4 DITAAC-ACERT
Gross Power	
Standard	74.5 kW/101 hp
Optional	93.1 kW/126 hp
Maximum Torque	
Standard	410 Nm/1400 rpm
Optional	496 Nm/1400 rpm
Bore	105 mm
Stroke	127 mm
Displacement	4.4 liter
• All engine horsepower (hp) are metric.	

Weights

Operating Weight	7200 kg
------------------	---------

Operating Specifications

Rated Load Capacity	3700 kg
Maximum Lift Height	6100 mm
Maximum Forward Reach	3109 mm
Top Travel Speed	40 km/h
Load at Max Height	2500 kg
Load at Max Reach	1500 kg
Outside Turning Radius Over Tyres	3585 mm
Outside Turning Radius Over Forks	4740 mm

Service Refill Capacities

Fuel Tank	150 liter
Hydraulic Tank	90 liter

Tyres

Standard	15.5/80-24 16PR
----------	-----------------

Brakes

Service Brakes	Servo assisted on front axle
Parking Brakes	Mechanical on front axle

Hydraulic System

Maximum System Pressure	250 bar
Maximum Pump Flow	150 liter/min
Pump Type	Variable displacement load sensing axial piston pump
Auxiliary Hydraulic Supply	
Intermittent	80 liter/min
Continuous	60 liter/min

Transmission Speeds

Forward	km/h
1	7
2	12
3	21
4	32
5	40
Reverse	
1	7
2	12
3	21

Boom Performance

	seconds
Boom Up	5.0
Boom Down	4.0
Tele In	4.5
Tele Out	5.0
Crowd Forward (dump)	3.0
Crowd Backward	3.0
Combined	
Up and Out	8.0
Down and In	6.0
Drawbar Pull 74.5 kW	82.4 kN
Drawbar Pull 93.1 kW	86.8 kN
Bucket Breakout Force to ISO8313	55 kN

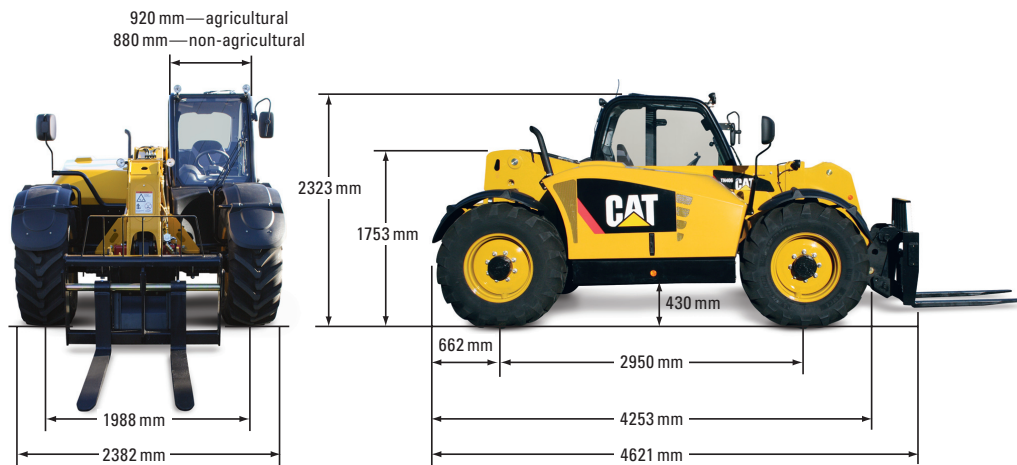
Sound

Operator Sound	78 dB(A)
Exterior Sound	
74.5 kW Engine	106 dB(A)
93.1 kW Engine	107 dB(A)

TH406 Telehandler

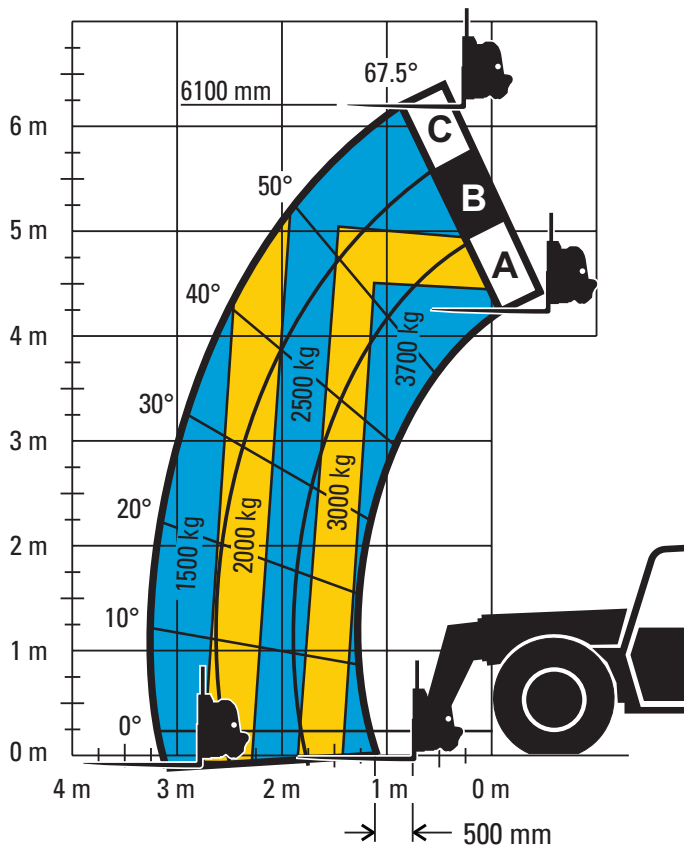
Dimensions

All dimensions are approximate.



Outside turning radius over tyres: 3585 mm

Load Chart and Dimensions



IMPORTANT

Rated lift capacities shown are with machine equipped with carriage and pallet forks. The machine must be level on a firm surface with undamaged, properly inflated tyres. Machine specifications and stability are based on rated lift capacities at specific boom angles and boom lengths. (If specifications are critical, the proposed application should be discussed with your dealer.)

DO NOT exceed rated lift capacity loads, as unstable and dangerous machine conditions will result.

DO NOT tip the machine forward to determine the allowable load.

Due to continuous product improvements, machine specifications and/or equipment changes may be made without prior notification.