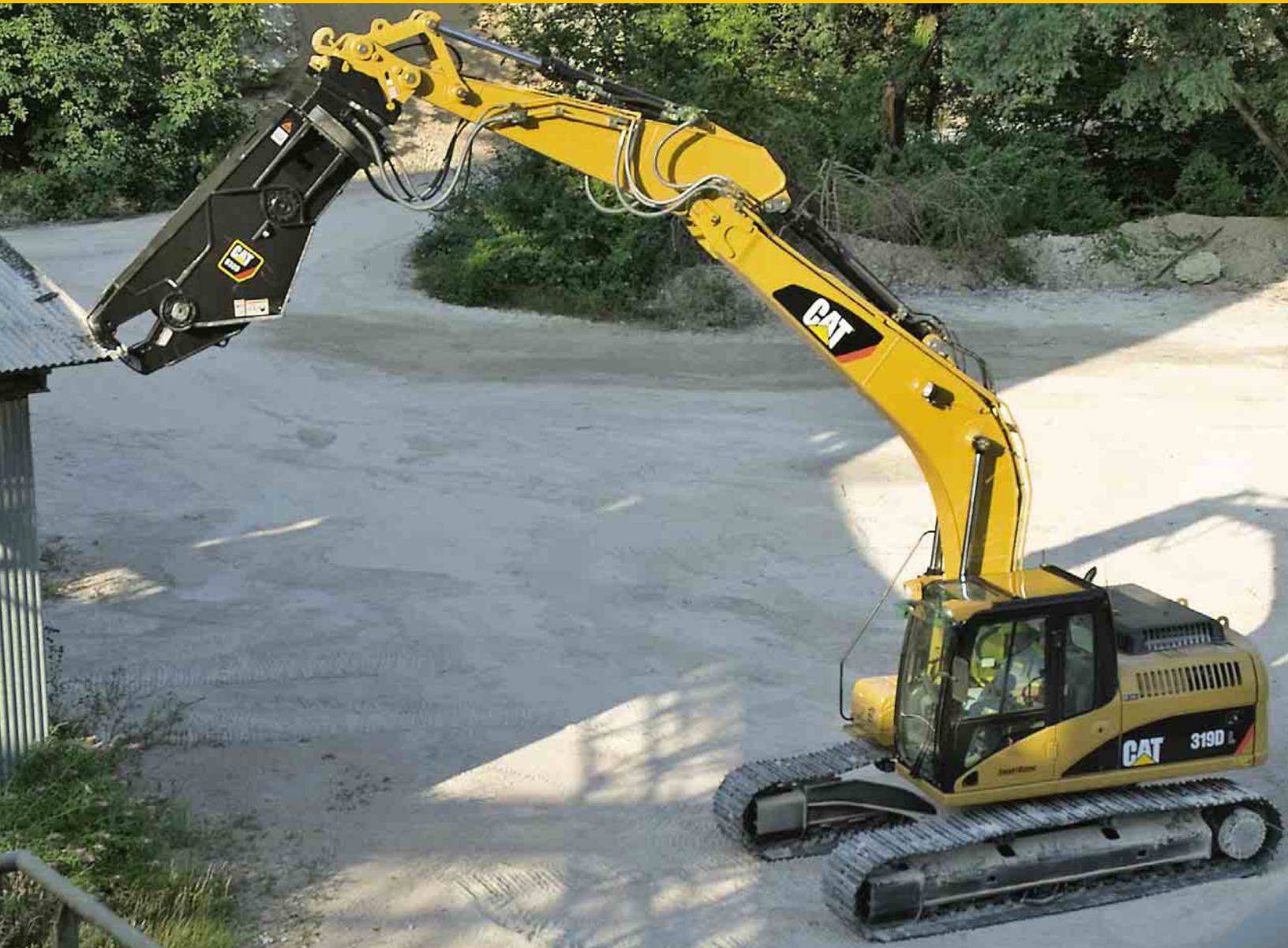


S305, S320, S325, S340

S300 Series Mobile Scrap and Demolition Shears



Features

Top-mounted rotator

Extremely efficient

Stick or boom mount

Benefits

All S300 shear models are equipped with 360° rotators of a proven design (identical to those on Cat multi-processors). These rugged rotation systems ensure quick and precise placement of the jaws in optimum cutting position without requiring movement of the excavator.

S300 shears have a very high force-to-weight ratio, compared with most competitive shears. Jaw openings of the shears are matched to the high shear force, greatly enhancing shear power, cycle time and reducing overall system cost.

Shears can be mounted on either the boom or stick of the excavator. Boom-mounted shears are preferred in scrap-processing applications; while demolition applications typically call for the greater reach of a stick-mounted shear.

S305, S320, S325, S340 Hydraulic Shears

Specifications and Dimensions

| | | S305 | S320 | S325 | S340 |
|--------------------------------------|-------|-------------|-------------|-------------|-------------|
| Weight* total | kg | 580 | 2150 | 3000 | 4250 |
| L Length | mm | 1886 | 3044 | 3453 | 3900 |
| H Height | mm | 660 | 1183 | 1374 | 1506 |
| W Width | mm | 390 | 800 | 800 | 1010 |
| J1 Jaw width (fixed) | mm | 230 | 335 | 375 | 440 |
| J2 Jaw width (moving) | mm | 60 | 90 | 100 | 120 |
| M Jaw opening | mm | 240 | 390 | 490 | 580 |
| S Jaw depth | mm | 290 | 440 | 570 | 680 |
| Shear forces | | | | | |
| Tip | kN | 392 | 882 | 1255 | 1520 |
| Primary blade center | kN | 637 | 1569 | 2206 | 2745 |
| At throat | kN | 1716 | 3726 | 5785 | 7158 |
| Hydraulic for cutting | | | | | |
| Max. operating pressure | bar | 250 | 350 | 350 | 350 |
| Recommended flow | L/min | 60 | 150 | 200 | 300 |
| Return flow (during opening) | L/min | 100 | 240 | 300 | 510 |
| Time open | sec | 3.5 | 4 | 5 | 4.5 |
| Time close | sec | 2.5 | 3 | 3 | 3.5 |
| Hydraulic for rotating | | | | | |
| Max. operating pressure | bar | 100 | 140 | 140 | 140 |
| Recommended flow | L/min | 20 | 40 | 40 | 40 |
| Connector-size | ORFS | 1 3/16 | 1 3/16 | 1 3/16 | 1 3/16 |
| Excavator size; Stick mounted | | | | | |
| Min. | kg | 5000 | 15 000 | 25 000 | 35 000 |
| Max. | kg | 7500 | 25 000 | 35 000 | 60 000 |
| Excavator size; Boom mounted | | | | | |
| Min. | kg | 4000 | 10 000 | 15 000 | 25 000 |
| Max. | kg | 5000 | 15 000 | 25 000 | 35 000 |

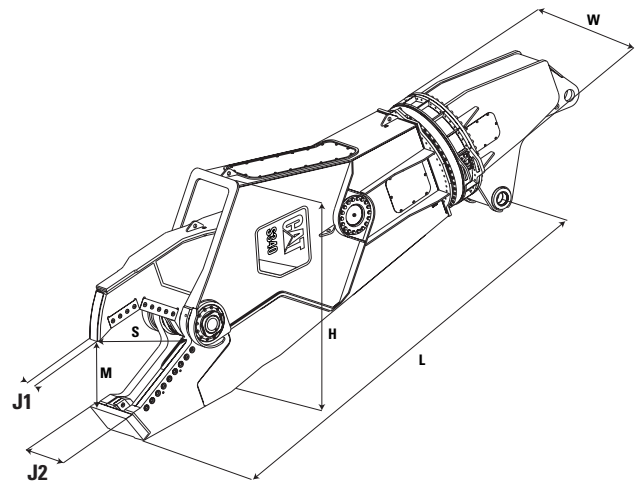
* Weight includes mounting bracket (stick)

Hydraulic Requirements

Two way hydraulic high pressure lines for opening/closing and two way hydraulic medium pressure lines for rotation controlled by joystick in the cab or pedal according to customer's choice.

Matching Guide

| Shears | Hydraulic Excavators |
|---------------|---|
| S305 | 307C |
| S320 | 312C, 315C, 318C, 319C/319D, 320C/320D, 321C, 322C, 323D, 324D, 325C/325D, M315C, M318C |
| S325 | 315C, 318C, 319C, 320C/320D, 321C, 322C, 323D, 324D, 325C/325D, 330C/330D, M315C, M318C/M318D |
| S340 | 322C/320D, 324D, 325C/325D, 330C/330D, 345C |



For more complete information on Cat products, dealer services, and industry solutions, visit us on the web at www.cat.com

HEHX3156-2 (03/2007) hr

© 2007 Caterpillar -- All Rights Reserved

Materials and specifications are subject to change without notice. Featured machines in photos may include additional equipment. See your Caterpillar dealer for available options.

CAT, CATERPILLAR, their respective logos, "Caterpillar Yellow" and the POWER EDGE™ trade dress, as well as corporate and product identity used herein, are trademarks of Caterpillar and may not be used without permission.

CATERPILLAR[®]
TODAY'S WORK. TOMORROW'S WORLD.™