

WE CAN HANDLE IT

Our range of machines for your material handling needs



CATERPILLAR®



Built for **your business**

We've always had the reputation for designing tough machines for tough jobs. But material handling is different. It needs more than just toughness to succeed – flexibility, efficiency and productivity are also essential. That's why we constantly innovate and refine our machines so they can deal with every aspect of material handling. What's more, each machine can be further customized with our range of work tools so that you can finish any job in optimum time. It's a combination of rugged design, industry specialization and work tool flexibility that makes Cat material handling machines real business building tools.

Machines specially built for the working conditions

Cat material handling machines have been designed to deliver the perfect balance of practicality and productivity. Here's how:

- Cat machines are initially built to be versatile and work in a whole range of material handling environments, from railroads to seaports, scrap yards to grain silos.
- Productivity is further increased with the addition of our range of high-quality work tools. Now you can boost your material handling capabilities and get the best out of your machine.

- Cat machines have both the power and the capability to shift the largest and the heaviest materials.
- Material handling is one of those industries that never stops. That's why every Cat machine comes with the backing of our world-class dealer support designed to keep you up and running with rapid solutions.

Index

- 3 Built for your business - Machines specially built for the working conditions
- 4 Dedicated to your needs
- 6 Wheeled and Tracked Material Handlers - Maximized lifting performance
- 9 Maximized lifting performance
- 10 Track-Type Tractors - Maneuvering materials
- 13 Track-Type Loaders - Flexible utility machines
- 14 Medium Wheel Loaders - Multi-purpose cargo lifters
- 16 Large Wheel Loaders - Material handling giants
- 18 Integrated Toolcarriers - All purpose handler
- 20 Small Wheel Loaders - Versatile power
- 22 Skid Steer Loaders - For the big tasks in small spaces
- 24 What's good for the environment is good for business
- 25 Services
- 25 Complete Customer Support
- 26 Machine specifications

Today's Cat material handling machines have a heritage that dates back to the 1930's.





1 + 3 Bulk handling
2 Wood handling

Dedicated to your needs

Scrap, recycling & waste re-handling

In this demanding environment, machines need to be flexible, tough and able to fulfil a multitude of tasks with a multitude of different materials. Caterpillar's range of both tracked and wheeled material handlers can effectively sort and stockpile materials, load and unload vehicles, and clean up the site at the end of the day.

Warehousing and stockpiling

Facilities, such as these, use a range of Cat® machines from the material handlers to the wheel loaders, for jobs that involve careful unloading and moving of bulk materials. Various tool options allow Cat machines to be converted for different jobs such as sorting through piles or stacking pallets, recovering materials and loading them onto trucks, trains or barges.

Seaports

Time lost loading and unloading cargo can be costly as well as frustrating. Because we have a range of machines specifically adapted to the needs of port professionals, we can help you get the job done quickly and efficiently and keep shipping moving.

Inland ports

Cat machines, such as the wheeled and tracked material handlers, and loaders are particularly useful in the rapid movement of materials between different modes of transport. They can often be found working as loaders and carriers, movers and sorters in this transient working environment.





1 Bulk handling for inland waterways application
 2 Machine monitoring control
 3 Scrap handling application, orange peel grapple

Wheeled and tracked Material Handlers

Wheeled Material Handlers – Versatile

Lifting Performance

Wheeled material handlers have the power, reach and controllability to sort materials, unload barges, load trucks and feed various machines such as smelters or hoppers, all from a comfortable distance. They are popular machines in all material handling segments and because of their wheels, they can transport a grapple-full of material over short distances, stretching their usage to more mobile jobs.

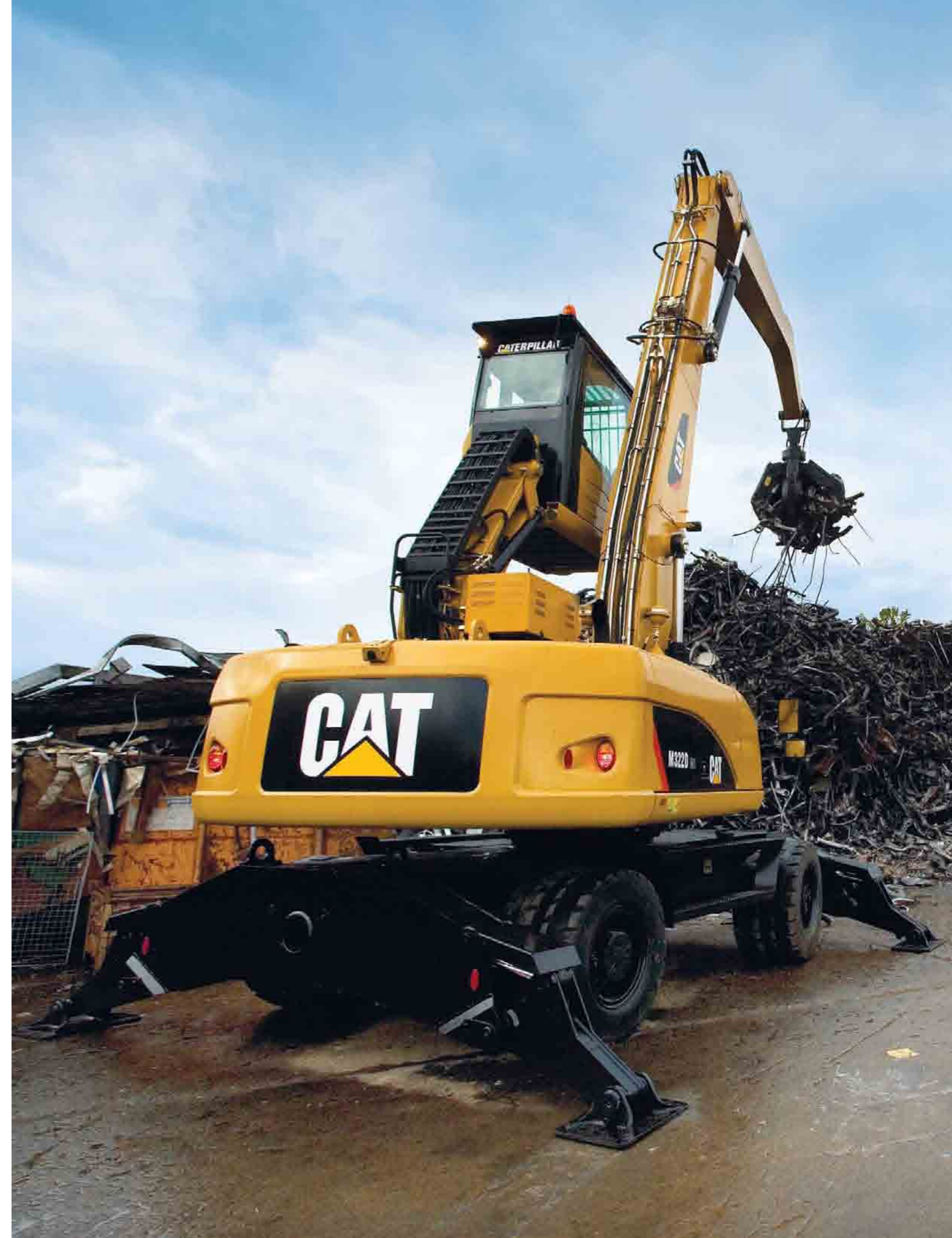
Tracked Material Handlers – Maximized

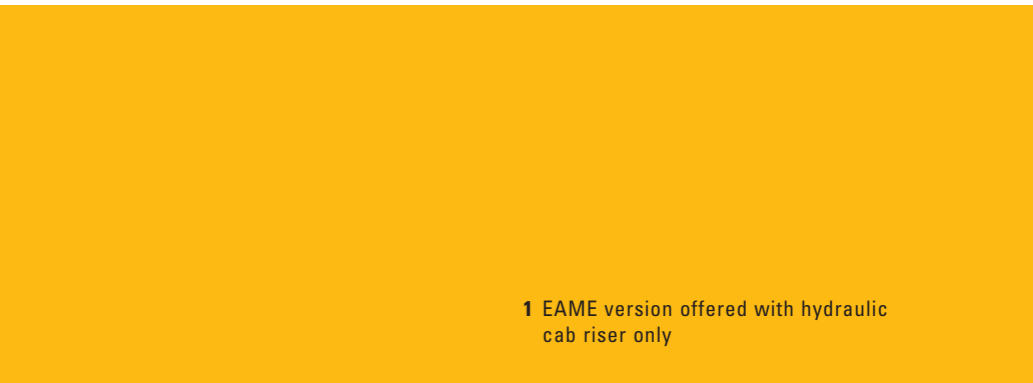
Lifting Performance

Tracked material handlers have a large choice of long front parts and work tools. This makes them particularly useful in scrap yards, recycling plants and ports. They can effectively load and unload, sort and cast a range of loose materials from scrap metal to bulk materials. Also, because they're on tracks, they will still remain stable on slippery, uneven surfaces.

Work tools

- Orange peel grapple
- Range of clamshell buckets
- Range of grapples for various commodities
- Magnet





1 EAME version offered with hydraulic cab riser only



Maximized lifting performance

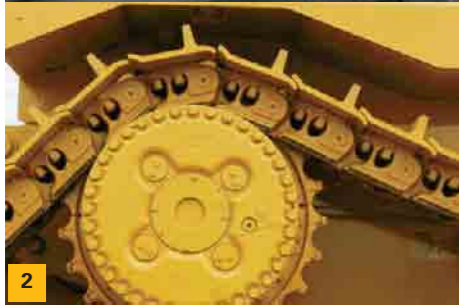
Wheeled and Tracked material handlers come equipped with:

- Engines with ACERT™ Technology use unique emission reduction technology to ensure reliable productivity through machine uptime.
- New front parts designed to withstand greater torsions allowing the machine to deliver higher productivity.
- Pre-screens on doors and the engine hood to catch debris and prevent radiator plugging.
- A choice of undercarriages and front parts providing different combinations of stability, reach and productivity in line with jobsites and application requirements.
- A Heavy Lift Mode which allows extra heavy loads to be safely lifted over the front and side, when activated.
- Joysticks which include proportional thumbwheel switches giving the operator precise control of the tool rotation and cab elevation.

- A new monitor and software that saves a significant amount of effort when displaying information such as liquids levels and temperatures.
- Hydraulic or fixed cab risers that provide operators with the visibility they need to safely do the job.

Work tools

- 4 or 5 tines orange peel grapple
- Sorting grapple
- Magnet
- Range of clamshell buckets
- Range of grapples for various commodities



1 Advisor Monitoring System (AMS)
2 Elevated sprocket design

Track-Type Tractors

Maneuvering materials

Track-type tractors continue to be the most widely used machines for coal / woodchip handling operations. Equipped with a U-shaped coal dozer, they are suitable for meeting high production requirements over dozing distances of less than 150 m. Their tractive capabilities and gradeability permit them to operate on the sides of the stockpile and surge pile, which often prove inaccessible to other types of equipment. They can also remove snow and frost penetrated coal / woodchip from the stockpile surface so that rubber-tired equipment can work efficiently.

Track-type tractors come equipped with:

- Cat Diesel Engines to provide the power, high torque rise, reliability and performance.
- Elevated sprockets on D6N and up eliminate final drive stress induced by roller frame movement and ground impact loads. Final drives pull chain only. Seals moved up out of dirt, sand and water for longer life. Blade visibility improved because operator sits higher.
- Differential steering on D6N through D8 allows infinitely variable turning radius and make a “power turn” keeping both tracks working for more traction and higher performance.
- Tag link on D7R Series II and up; L-shaped push arms on D6N through D6T. Both designs allow closer mounting of dozer blades.
- Accessible modular design on D6N and up greatly reduces drive train removal and installation time resulting in reduced repair costs.
- A cab that provides excellent comfort with ergonomics controls and air conditioning, plus outstanding visibility through large windows and additional lights.

Product customization to meet your needs:

Caterpillar custom products adapt tractors to meet demanding conditions of your job sites. For example, for stock-piling operations Caterpillar modified the D10T to protect your investment and provide maximum productivity:

- Dual stage turbine precleaners for ejecting any debris before air cleaner element.
- Ducted and sealed 95 amp alternator for protection against debris.
- Hydraulic reversible fan and Advanced Modular Cooling System radiator with steel copper cores and perforated engine enclosures for greater cooling performance.
- Solid black hood to keep debris from falling into engine compartment.
- Partial bottom guards for better protection and letting debris fall out off engine compartment.
- Cab-mounted air conditioner to keep away from debris.
- Dual pane glass & pre-cleaner for clear in-cab air.
- Fast fuel and oil change systems for increased availability.
- Rear vision camera and high intensity or halogen lights for greater visibility.
- Black dozer lift cylinders and back of dual tilt blade for reduced glare and increased performance.

Work tools

- Blades for various materials such as coal and woodchips. Coal blades are available from 16.1 m³ on D7R2 to 74.9 m³ on D11T, and woodchip blades from 15.3m³ on D6T to 72.6 m³ on D10T.





New D-Series Track-Type Loaders

Flexible & Versatile utility machines

Track-Type Loaders are highly versatile machines. they can load and unload trucks or trains, and sort a range of materials from recyclable to wood.

Track-Type Loaders are productive machines, ideal, amongst other tasks, for pushing material to the centre of the ship hold for collection by fixed cranes.

Track-type loaders come equipped with:

- 4 lifting eyes to load/unload the machine in the ship's hold.
- Hydrostatic transmission that provides excellent manoeuvrability.
- Electro-hydraulic controls, for ease of operations.
- A new (optional) Joystick Steer control, further enhancing ease of operations and operator productivity.
- Undercarriage options for the best match between floatation and traction.
- SystemOne™ undercarriage: extending undercarriage life and reducing operation costs.
- A new operator station providing unmatched visibility with large windows and additional lights, plus additional comfort from ergonomically designed seat-mounted controls and automatic air conditioning.

- Windshield protection against large debris, a heavy-duty bumper and bottom guards.
- Centre hole track shoes that prevent material retention on the tracks.
- New tiltable cab, to access, easier than ever before, all hydraulics and engine components for regular maintenance, servicing and diagnostic. A hydraulic manual pump allows this operation to be done on-site.

Work tools

- Range of general purpose and multi-purpose buckets.



1



2

1 Ship hold application
2 Waste application



- 1 Electro-Hydraulic implement controls
- 2 Cooling system
- 3 Engine compartment access

Medium Wheel Loaders

Multi-purpose cargo lifters

Medium wheel loaders are a good choice for facilities that need a reasonably sized machine with the strength and control to work on jobs such as shifting materials, feeding hoppers and preparing sites. Each machine comes equipped with an innovative combination of both proven and enhanced technologies, creating one of the most reliable, all-rounded machines in material handling.

H-Series medium Wheel Loaders come equipped with:

- ACERT™ Technology engines and its proven technology of optimised combustion to meet new emission regulation while maintaining fuel efficiency, reliability and durability.
- New Cat hydraulic valves which allow smooth simultaneous lift and tilt controls for greater feel and accuracy.
- New Cat load-sensing pump (for 938H up to 972H) which provides flow on demand for a more productive and fuel-efficient machine.
- Excellent overall cab visibility allowing operators to work safely and productively: good side visibility with top to bottom windows, sloped hood giving the best rear visibility on any machine in the industry.
- Rear view camera option for even closer rear visibility.
- Optional high intensity discharge lights (two at the front and two at the back) that guarantee exceptional night-time visibility.
- Electro-Hydraulic implement controls come as standard on the H-Series and provide finger tip control with low effort levers for extra comfort and productivity.
- Fine modulation that allows operators to increase precision of tilt and lift levers and provide a precise control of the linkage.

- In-cab programmable kick-outs (lift, tilt, and return to dig) that provide instant machine adjustments and enhance productivity.
- A perforated trash grill that catches debris and prevents plugging of the radiator.
- 6 Fins per inch heat exchanger cores make sure the system stays cleaner for longer.
- New Service Centers to access, easier than ever before, all hydraulics and electrical components for regular maintenance, servicing and diagnostics.
- Variable pitch fan*

Work tools

- High dump bucket
- Large capacity bucket
- Waste/Light duty bucket
- Carriage and pallet forks
- Quick coupler
- Material handling buckets
- Woodchip and clean-up buckets

* Sept 08





Large Wheel Loaders

Material handling giants

Cat large wheel loaders are the 'goliaths' of material handling, which is why they are mandatory in large seaport environments. Due to their size, power and a multitude of bucket options, they can lift and carry all types of dry bulk material in a short amount of time.

If you're looking for machines that can handle huge tasks at a low cost per ton, look no further than Cat's range of Large Wheel Loaders.

Large wheel loaders come equipped with:

- Fuel Management System that optimizes fuel consumption depending on production targets (988H).
- A complete system based around a quick coupler and a series of rugged tools especially for handling and manipulating large amounts of materials.

Work tools

- Large capacity bucket
- Waste/light duty bucket
- Quick coupler



1



2



3

- 1 Rear-view camera
- 2 ACERT™ Technology
- 3 Easy maintenance

Integrated Toolcarriers

All purpose handler

Different materials demand different techniques. That's why the IT38H and IT62H are specially built for high utility material handling. They're compatible with a complete range of work tools and they have the muscle and maneuverability to get materials where they need to be, quickly. Whether it's feeding loose grain into a hopper or unloading a truckload of pallets, Cat's integrated toolcarriers are the right machine for the job.

Integrated toolcarriers come equipped with:

- ACERT™ Technology Engine and load sensing hydraulics system for improved fuel efficiency.
- A hydraulic, quick coupler system that allows a fast exchange of work tools from inside the cab and quick disconnects for manual hydraulic changes.
- An 8-bar linkage that delivers parallel lifting to keep loads level throughout the cycle, plus, a load sensing hydraulic system to save fuel with electro hydraulic control levers to optimize operator maneuverability.¹
- Adjustable kick-outs (lift, tilt and return to dig) for instant machine adjustments to suit your working conditions.¹
- Excellent machine stability and payload capacity with larger counterweight.
- An optional rear view camera for increased visibility and productivity.
- Engine Low Idle Management (EIMS) maximizes fuel efficiency and provides flexibility in managing idle speeds for specific application requirements.
- Ergonomically designed cabs with layouts that provide comfortable operating conditions and low sound levels.
- Excellent work tool visibility with an uncluttered hydraulic hose routing.

- Easier serviceability with sight gauges for level checks of engine fluids and a Cat monitoring system, plus ground level cleaning with a swing-out front grill and side panel access for the cores.
- A cooling system designed to reduce radiator plugging, plus an on-demand fan that adjusts to the requirements of the machine, increasing fuel efficiency.
- Variable pitch fan¹
- The Messenger display provides real-time machine performance, engine and diagnostic data.²
- The Auto-diff lock provides seamless engagement when maneuvering in varying underfoot conditions.³

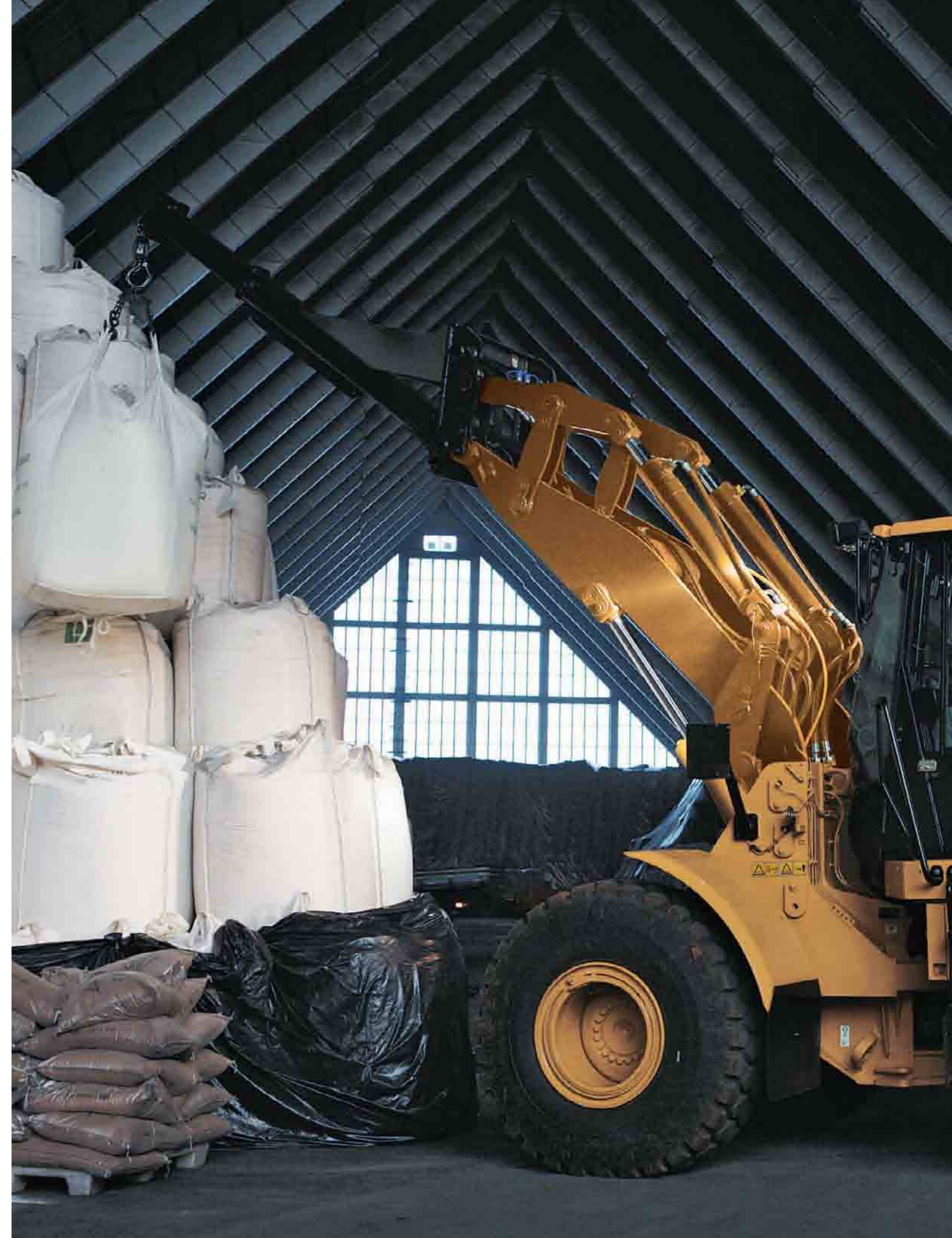
Work tools

- Buckets varying from general use to specialized
- Brooms
- Carriage and pallet forks
- Material handling arms

¹ Only available on IT62H

² As of September 2008

³ Only available on IT38H





Small Wheel Loaders

Versatile Power

Regardless of their size, Cat small wheel loaders pack the necessary power to shift various heavy materials. They're particularly useful as backup machines for larger vehicles since they can access size-restricted areas, indoors or outdoors. What's more, they utilize innovative design, user-friendly technology and Cat's wide range of work tools, to become the most versatile machines in material handling.

Small wheel loaders come equipped with:

- Spacious cabs that have been ergonomically designed for operator comfort and excellent visibility.
- An optional rear view camera that offers excellent rear visibility, increasing productivity and reducing the risk of damage to the machine.
- A clear, ground level access to all components, plus colour-coded numbered wiring, swing out components, sight gauges and scheduled oil sampling ports, for faster cleaning and maintenance.
- A choice of 6 hydraulic functions (on the 930H) and adjustable flow on the 3rd hydraulic function (integrated into one joystick on the 924H and 930H) allowing a proportional control of work tools and increasing the machine's versatility.
- A quick steer option (on the 930H) gives one quarter of the traditional wheel movement to achieve the same turn, reducing operator fatigue and giving faster truck loading times.

- VersaLink™ loader linkage (on the 924H and 930H) combines parallel lift and Z-Bar linkage, and spreads the load evenly for increased versatility, productivity and return on investment.
- An optional high lift VersaLink™ provides an additional 483 mm of lift height or 406 mm of reach at the horizontal loader arm position (on the 924H and 930H).

Work tools

- Range of buckets for different materials
- Material handling arm
- Quick coupler
- Carriage and pallet forks
- Brooms



1



2

1 Shredder feeding

2 Transfer station application



1 + 3 High-lift for truck loading
2 Easy maintenance

Skid Steer Loaders

For the big tasks in confined spaces

If you're looking for a compact machine with outstanding power that can handle the big tasks, then look no further than Cat's range of B2 and C-Series skid steer loaders. They can load and carry materials with ease, speeding up to 19 km/hours.

Their size makes them ideal for indoor jobs, such as scooping up material and cleaning floor space.

They can even be lifted into places, such as barges or rail wagons, to finish the jobs that were previously out of reach.

C-Series Skid steer loaders come equipped with:

- Excellent control and maneuverability due to the new Electro-Hydraulics Controls.
- Unmatched auxiliary hydraulic horsepower with the High Flow XPS for optimized flow and torque in the Work Tool.
- Caterpillar's exclusive AMIC's system (Advanced Machine Information and Control System) offers Travel Speed Control, offering 10 constant speed settings while delivering maximum flow and pressure to your work tools.
- Speed Sensitive Ride Control improves your comfort by isolating you from rough ground conditions and your productivity levels by delivering a smoother ride, with better material retention on uneven ground.
- Quiet and clean Cab with the Industry first Sealed and Pressurized Cab.
- Thumb roller variable auxiliaries making it easier to power grabbers, shears and sorting buckets.

- A range of tire options including Flexports with low sidewalls, reducing the likelihood of punctures in even the toughest scrap and waste applications.
- Vertical Lift linkage providing more useable reach, ideal for truck loading and pallet work.
- Unbeatable cooling package.
- Easy access for cleaning and service.

Work tools adjustable on the standard Quick coupler:

- Buckets
- Shear
- Brooms
- Carriage and pallet forks
- Industrial grapples
- Blade
- Material handling arm
- Backhoe Attachment
- Hammer





What's good for the environment is good for business

Caterpillar remanufacturing – high technology processes bring tired products back to life

Cat remanufacturing (Reman) has the capacity to remanufacture thousands of used Caterpillar machine parts. Cat uses a host of remanufacturing technologies, including environmentally-friendly cleaning, computer-controlled inspection and leading-edge techniques which allows end-of-life components to be brought back to the same standards of quality, efficiency and reliability they had when they were new.

ACERT™ Technology - turning emission regulations into business benefits

Emission regulations are pushing all equipment manufacturers to reduce the levels of gases like NO_x, CO₂ and also to reduce particulate matter.

Conventional methods can cause increased wear and over time parts become susceptible to degradation. At Caterpillar we took a new and different route. Cat engines with ACERT Technology do more than help clean the air. By going straight to the combustion process, they burn fuel with more precision and more efficiency, while maintaining engine performance. It is a solution developed without compromising power or reliability. Cat engines with ACERT Technology use historically proven reliable components. As a result you get machines that meet regulatory requirements with a superior power system, which won't get obsolete as regulations tighten. ACERT Technology is provided in C6.6, C7, C9, C11, C13, C15, C18, C27 and C32 engines.



Services

Caterpillar

We trade Caterpillar products for the goods and services that you produce. By leveraging our world class capabilities, we can create efficient transactions specifically to meet your needs as a material handling professional.

OEM solutions

OEM Solutions provide integrated solutions, products and services to external customers that work in close partnership with Caterpillar.

360° Solutions

Your 360° Solutions package consists of four elements, tailored to your needs.

The right machine for your business

Your Cat dealer will guide you through your machine selection process, helping you choose the right machine for your specific industry and applications. Cat Certified Used is a viable alternative to new. These machines have proved themselves and are ready to continue serving.

The most attractive finance package from Cat Financial

Cat Financial specialises in equipment financing and has a reputation as a trusted partner. Whatever your business, your Cat dealer and Cat Financial offer a range of flexible, highly competitive financial solutions for new Cat machines, making it faster and easier to obtain the Cat equipment you need.

The most cost-effective Cat Customer Support Agreement

Cat Customer Support Agreements are the most effective way of running your machine at peak performance and eliminating the risk, cost, disruption and loss of revenue caused by unscheduled downtime.

The most beneficial Cat Warranty

The warranty coverage from your Cat dealer is backed by the worldwide resources of Caterpillar and is specifically designed to provide the highest levels of repair cost protection for Cat machines. This comprehensive coverage will enhance and sustain your entire ownership experience and provide complete peace of mind.

Cat experts are always available to help you make the decisions that are best for your business.

Machine specifications

WHEELED MATERIAL HANDLERS

Model	Engine	Net power kW/hp	Operating weight kg	Max reach/ height/depth m*
M318D MH ¹⁾	C6.6 ACERT	124/169	23 400	11.0/12.0/2.2
M322D MH ¹⁾	C6.6 ACERT	123/167	25 700	12.5/13.3/2.9
M325D MH ²⁾	C7 ACERT	140/190	30 900	15.7/17.1/6.4
M325D LMH ²⁾	C7 ACERT	140/190	35 300	15.7/17.6/5.8

¹⁾ 2400 mm cab riser ²⁾ 2600 mm cab riser *At stick nose, with straight boom and drop nose stick

TRACKED MATERIAL HANDLERS

Model	Engine	Net power kW/hp	Operating weight kg	Max reach/ height/depth m*
330D MH	C9 ACERT	200/270	45 400	16.0/16.8/7.1
345C MH	C13 ACERT	239/320	57 400	18.0/18.0/8.4
385C MH	C18 ACERT	390/530	90 000	21.8/21.9/8.3

*At stick nose, with straight boom and drop nose stick

TRACK TYPE TRACTORS

Model	Engine	Net power kW/hp	Operating weight kg	Blade
D6K (XL)	C6.6 ACERT	93/125	12 886	VPAT
D6K (LGP)	C6.6 ACERT	93/125	13 467	VPAT
D6N (XL)	C6.6 ACERT	112/150	16 555	VPAT, SU
D6N (LGP)	C6.6 ACERT	112/150	17 741	VPAT, SU
D6T	C9 ACERT	138/185	18 400-21 800	Std, A, SU, XL, VPAT, XWA, XW, LGP, S, LGP, VPAT
D6T (XL/XW/LGP)	C9 ACERT	149/200	23 119	VPAT, S, SU, A
D7R II	3176C	179/243	24 760	S, SU, U, A
D8T	C15 ACERT	231/314	38 660	S, SU, U, A
D9T	C18 ACERT	306/416	49 600	SU, U
D10T	C27 ACERT	433/589	65 800	S, SU
D11T	C32 ACERT	634/862	104 590	SU, U
D11T CD	C32 ACERT	634/862	113 000	CD

TRACK TYPE LOADERS

Model	Engine	Net power kW/hp	Operating weight kg	Bucket Capacity m ³
953D ¹⁾	C6.6 ACERT	95/129	15 150	1.6 - 1.85
963D ¹⁾	C6.6 ACERT	118/160	19 590	2.0 - 2.45
973C ²⁾	C9 ACERT	178/242	26 400	2.9 - 3.20

¹⁾ 4 welded lifting eyes on the rear bumper and lift arm ²⁾ transfer station package available

MEDIUM WHEEL LOADERS

Model	Engine	Net power kW/hp	Operating weight kg	Bucket Capacity m ³
938H ¹⁾²⁾	C6.6 ACERT	134/182	15 400	2.3 - 3.0
950H ¹⁾²⁾	C7 ACERT	147/200	19 500	2.7 - 4.0
962H ¹⁾²⁾	C7 ACERT	158/215	20 630	2.9 - 4.3
966H ¹⁾²⁾	C11 ACERT	195/265	27 300	3.5 - 4.8
972H ¹⁾²⁾	C13 ACERT	214/291	27 500	3.8 - 5.5
980H ¹⁾²⁾	C15 ACERT	260/354	33 300	4.5 - 6.1

¹⁾ 41) Waste Handling Package available ²⁾ High Lift Arrangement available

ATAAC Air to air aftercooled.
ACERT™ Advanced combustion emissions reduction technology.

Actual operating weight will depend on final machine configuration.
Net power is based on ISO 9249. All engine horsepower (hp) are metric.
C6.6, C7, C9, C11, C13, C15, and C18 are Cat engines with ACERT™ Technology.

LARGE WHEEL LOADERS

Model	Engine	Net power kW/hp	Operating weight kg	Bucket Capacity m ³	Straight Static Tipping load kg
988H ^{1,2,3,4,5)}	C18 ACERT	373/501	49 546*	6.3 - 15.7	34 825
990H ^{1,5,6)}	C27 ACERT	468/627	77 840**	8.4 - 13.4	45 923
992K	C32 ACERT	597/801	97 249	10.7 - 19.0	57 096
993K	C32 ACERT	708/950	133 637	12.2 - 23.0	84 525

¹⁾ Linkage / Lift Arrangement option Available ²⁾ Bulk Loading Package ³⁾ Block Handling Package ⁴⁾ Waste Handling Package ⁵⁾ Steel Mill Package
⁶⁾ Logging Package *Specs for 3.88 m Linkage **Specs for Standard Lift Arrangement

INTEGRATED TOOLCARRIERS

Model	Engine	Net power kW/hp	Operating weight kg	Bucket Capacity m ³
IT14G	3054C DIT	71/95	8450	1.2 - 1.4
IT38H ¹⁾	C6.6 ACERT	134/182	16 350	2.2 - 2.8
IT62H ¹⁾	C7 ACERT	158/215	19 400	3.25 - 4.25

¹⁾ Waste Handling Package

COMPACT WHEEL LOADERS

Model	Engine	Net power kW/hp	Operating weight kg	Bucket Capacity m ³
906H	3044C DIT	51/69	5630	0.9
907H	3044C DIT	51/69	5810	1
908H	3044C DIT	58/79	6465	1.1
914G	3054C DIT	71/95	7950	1.2 - 1.4

SMALL WHEEL LOADERS

Model	Engine	Net power kW/hp	Operating weight kg	Bucket Capacity m ³
924Hz ²⁾	C6.6 ACERT	97/132	11 020	1.7 - 2.1
924H ¹⁾²⁾	C6.6 ACERT	97/132	11 730*	1.8 - 2.8
928Hz ²⁾	C6.6 ACERT	112/152	12 560	2.0 - 2.5
930H ¹⁾²⁾	C6.6 ACERT	112/152	13 170*	2.1 - 5.0

¹⁾ High lift arrangement available ²⁾ Waste Handling Package *Specs for standard lift arrangement

SKID STEER LOADERS

Model	Engine	Net power kW/hp	Operating weight kg	Rated Operating Capacity kg
216B Series 2	C2.2	36/49	2580	635
226B Series 2	C2.2 T	42/57	2640	680
226B Series 2 High Flow	C2.2 T	42/57	2680	680
232B Series 2	C2.2 T	42/57	3060	862
236B Series 2	C3.6 T	52/71	3180	937
242B Series 2	C2.2 T	42/57	3140	952
242B Series 2 High Flow	C2.2 T	42/57	3180	952
246C XPS	C3.6 T	54/73	3350	975
256C XPS	C3.6 T	61/83	3430	1066
262C XPS	C3.6 T	61/83	3610	1225
272C XPS	C3.6 T	67/91	3760	1474

www.cat.com

Please consider the environment when printing

HEHH3602-1 (09/2008) hr

www.cat.com

© 2008 Caterpillar - All rights reserved. CAT, CATERPILLAR, their respective logos, ACERT™ and 'Caterpillar Yellow', as well as corporate and product identity used herein, are trademarks of Caterpillar and may not be used without permission.

CATERPILLAR[®]
TODAY'S WORK. TOMORROW'S WORLD.™

