

# TH414

## Telehandler



## SPECIFICATIONS

### Engine

Engine Model	Cat® C4.4 DITAAC
Gross Power	74.5 kW/101 hp
Maximum Torque	410 Nm/1400 rpm
Bore	105 mm
Stroke	127 mm
Displacement	4.4 liter

- All engine horsepower (hp) are metric.

### Weights

Operating Weight	9360 kg
------------------	---------

### Operating Specifications

Rated Load Capacity	3700 kg
Maximum Lift Height	13 700 mm
Maximum Forward Reach	9225 mm
Top Travel Speed	32 km/h
Load at Max Height	
Stabilizers Up	2000 kg
Stabilizers Down	3700 kg
Load at Max Reach	
Stabilizers Up	350 kg
Stabilizers Down	1150 kg

### Service Refill Capacities

	liter
Fuel Tank	150
Hydraulic Tank	90

### Tires

Standard	15.5/80-24 16 PR
----------	------------------

### Brakes

Service Brake	Servo assisted on front axle
Parking Brake	Dry disc on front axle

### Hydraulic System

Maximum System Pressure	250 bar
Maximum Pump Flow	113 liter/min
Pump Type	Variable Displacement Load Sensing Axial Piston Pump
Auxiliary hydraulic supply	
Intermittent	80 liter/min
Continuous	60 liter/min

### Transmission Speeds

Forward	km/h
1	7
2	12
3	21
4	32
Reverse	
1	7
2	12
3	21

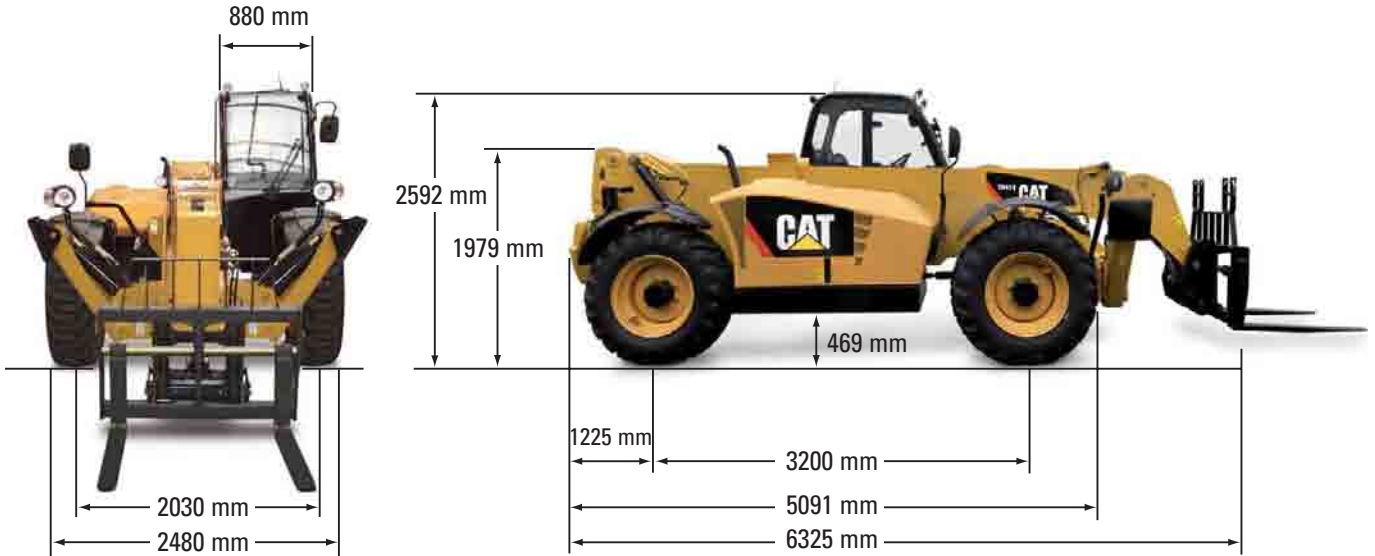
### Boom Performance

	seconds
Boom Up	13
Boom Down	8
Tele In	10
Tele Out	11
Crowd Forward (dump)	3
Crowd Backward	3
Combined	
Up and Out	23
Down and In	17
Drawbar Pull 74.5 kW	88 kN

### Sound

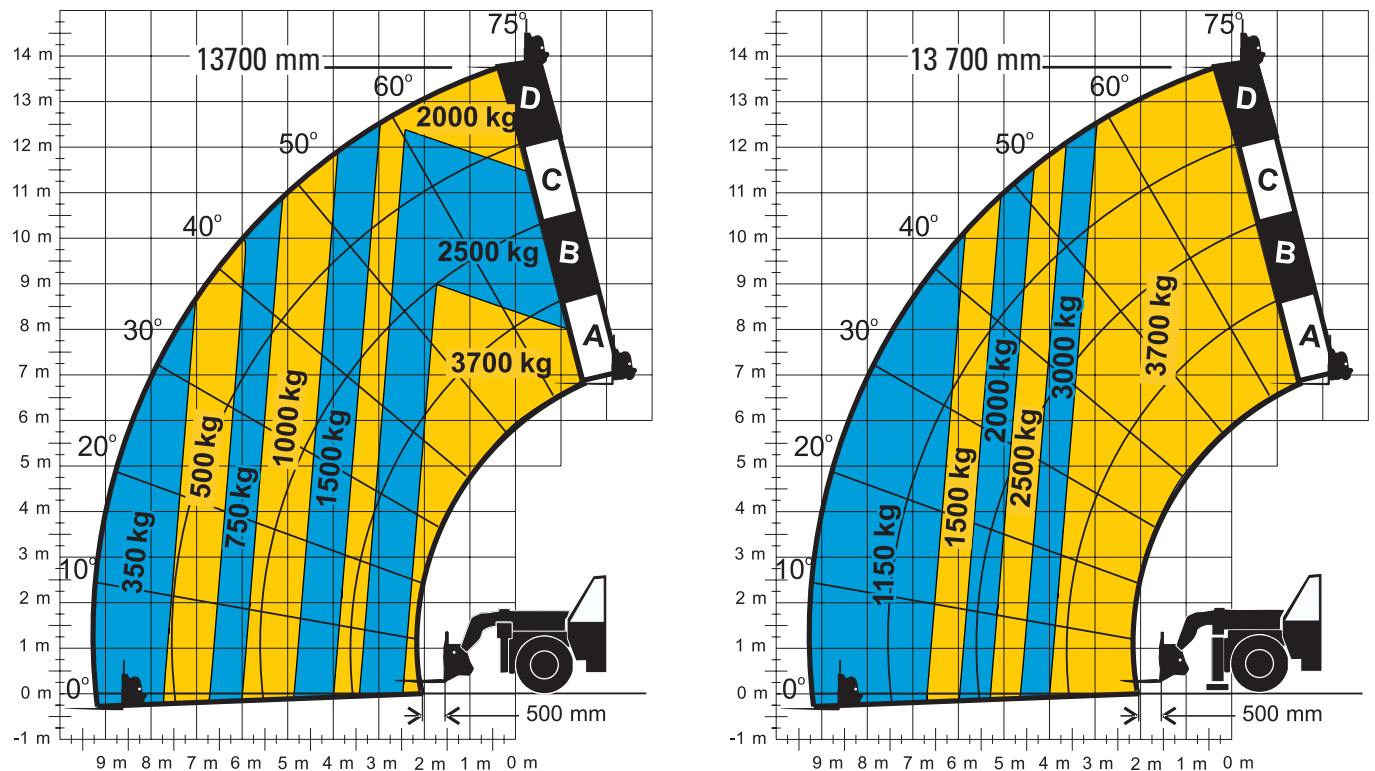
Operator Sound	78 dB(A)
----------------	----------

**Dimensions**



Outside turn radius over tires: 3805 mm

**Load Chart**



Due to continuous product improvements, machine specifications and/or equipment changes may be made without prior notification.

©2007 Caterpillar Inc. All Rights Reserved. CAT, CATERPILLAR, their respective logos, "Caterpillar Yellow" and the POWER EDGE trade dress, as well as corporate and product identity used herein, are trademarks of Caterpillar and may not be used without permission.