

D5

TRACK-TYPE TRACTOR



Net Power (1,770 rpm)

ISO 9249/SAE J1349

127 kW (170 hp)

ISO 9249/SAE J1349 (DIN)

(172 hp)

Operating Weight Ranges

VPAT

17 180-19 170 kg (37,875-42,263 lb)

Push Arm

17 340 kg (38,228 lb)

Cat® C7.1 Engine meets U.S. EPA Tier 4 Final/EU Stage V/Japan 2014 (Tier 4 Final)/Korea Tier 4 Final emission standards.



The new **Cat® D5** succeeds the renowned D6N with superior performance and the broadest choice of technology features to help you get the most from your dozer. Nimble and responsive, it has power for dozing and finesse for grading. Fully automatic transmission gives you seamless acceleration, so you can get the job done quickly.

THE NEW CAT® D5

PERFORMANCE AND
TECHNOLOGY



D5 127 kW/170 hp 19 170 kg/42,263 lb

D6N 124 kW/166 hp 18 346 kg/40,446 lb

NEW NAMES, SAME WORLD-CLASS PERFORMANCE

The update from D6N to D5 is part of an effort to make all Cat dozer model names simpler. Over the next couple of years, the Cat dozer range will be renamed from smallest to largest – D1 to D11 – with one model per size class and no more letter modifiers like “N,” “K,” “T.”

While the number may be different, the D5 gives you all the advantages of the D6N and so much more. The D5 delivers more weight and horsepower, more technology and more performance, helping you make the most of your equipment investment.



BEST-IN-CLASS PERFORMANCE

Nimble, responsive and maneuverable with a fully automatic transmission for seamless acceleration, fast cycle times and long-term durability. New cab sets the standard for visibility, comfort, productivity.

UP TO 50% MORE PRODUCTIVITY WITH CAT TECHNOLOGY

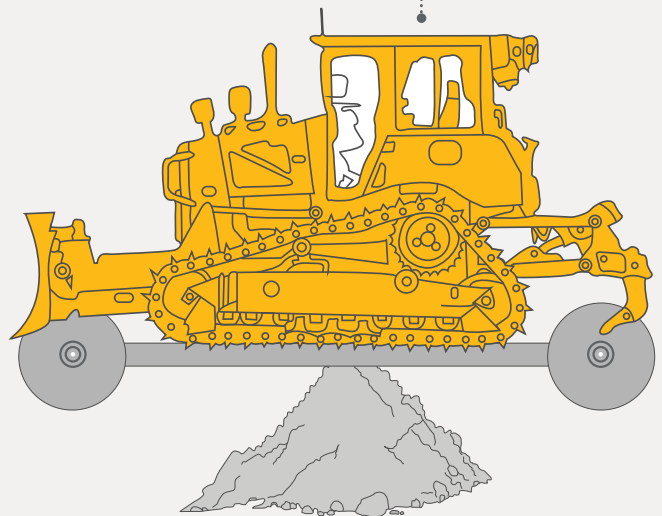
More technology choices to help operators work better, faster and safer. Updated GRADE with 3D and Slope Assist™ help achieve the best quality results, while helpful new technologies make machine operation easier and more efficient.

MORE POWER TO WORK

Goes beyond D6N with more power and added performance to get the job done. Stronger structures offer more durability and uptime, while a new purpose-built push arm dozer helps you take on heavier work.

BALANCED WORKLOAD

MAXIMIZE YOUR EQUIPMENT INVESTMENT WITH ONE MACHINE **BALANCED FOR DOZING AND GRADING**





SPREAD MORE, GRADE MORE

POWER TO PUSH YOU FORWARD



BIGGER, STRONGER

Ideally balanced for both dozing and grading, the D5 delivers more weight and horsepower for even more power and versatility. Take on even bigger tasks with new purpose-built push arm configuration.



FULLY AUTOMATIC

Experience powershift durability with the seamless acceleration of a fully automatic 3-speed transmission. Just set your desired ground speed and the dozer adjusts for maximum fuel efficiency and power to the ground.



BEST-IN-CLASS GRADING

Balanced, nimble and fast, the D5 gives you agility and ideal machine balance so you can achieve high quality grades quickly. A variety of technology features help you grade better and faster, with less operator input.



TURN TIGHTER

Improved steering performance gives you a tighter turning radius and quicker cycle times, so you can work faster and steer around obstacles on the job site with ease.

The broadest range of factory-integrated GRADE technologies and built-in features help operators of varied experience levels make the most of every shift.

TOP RESULTS, LESS EFFORT

- + FINISH JOBS FASTER
- + REDUCE REWORK
- + IMPROVE YOUR PROFITS

CAT® TECHNOLOGY IS LIKE HAVING A COACH IN THE CAB

PLAY YOUR BEST

Optimal efficiency, fewer operator inputs

KNOW THE SCORE

Real-time Feedback



NO FOUL

Save rework, time, materials

OUTPACE THE COMPETITION

WORK SMARTER. WORK SAFER.



CAT GRADE TECHNOLOGY

BOOST YOUR PRODUCTIVITY

NO GPS SIGNAL? NO PROBLEM

Cat GRADE with Slope Assist automatically maintains blade position without a GPS signal. Put it to work building pads, creating simple design plans on-the-go, or working where GPS is unavailable.

FIRST PASS TO FINISH GRADE

Cat GRADE with 3D has been updated to give you even more speed and accuracy without position sensing cylinders. The factory-integrated system has a new, friendly 10-inch (254 mm) touchscreen that works like a smart phone, so it is easy for operators to pick up quickly. Smaller antennas are integrated into the cab roof for even better protection. AutoCarry™ is included to automate blade lift for more consistent blade loads and less track slip.

READY WHEN YOU ARE

With Attachment Ready Option (ARO), your dozer comes from the factory ready for simple installation of an aftermarket grade control system. You will also find a mounting location and connections in the cab to make it easier to utilize your technology systems.



STABLE BLADE

Stable Blade has been improved to make it even easier to get smoother surfaces faster when grading manually. Works seamlessly with operator blade inputs to help reduce imperfections and produce a smoother surface.

BLADE LOAD MONITOR

Get real-time feedback on current load versus the optimal blade load based on your ground conditions. Actively monitors machine load and track slip to help you reach optimal pushing capacity.

TRACTION CONTROL

Save time, effort, fuel and track wear. If high track slip is detected, Traction Control temporarily reduces track power so the operator can adjust blade load and limit the track slip.

Note: Blade Load Monitor and Traction Control packaged with Cat GRADE with 3D. Requires additional GPS sensor.



ENHANCED POWER TRAIN CONTROL **TOUGH OUTSIDE SMART INSIDE**

Steering and slope work just got easier. Advanced controls automatically manage the power train and brakes to help operators experience better steering control and to maneuver more easily on slopes. No extra operator inputs to think about – the built-in features just work in the background.



HELP ON HILLS

Hill Descent Control maintains preselected machine speed, without using the service brakes, for added control when working downhill. **Hill Hold** automatically engages the brakes to hold position when in neutral on a slope.

PRECISE CONTROL

Use the **Decel Brake Pedal** to control machine speed all the way to a complete stop, or for smooth inching control.

PINPOINT TURNING

Turn tighter when spreading dirt or working in narrow spaces. **Steering Radius Control** uses steering and decel pedal input to automatically downshift for a tighter turning radius and more maneuverability.



UNPRECEDENTED EASE OF OPERATION

No need to worry about shifting gears to get the most from the machine – just choose your ground speed and go. The dozer automatically optimizes based on load for greatest productivity and fuel efficiency.

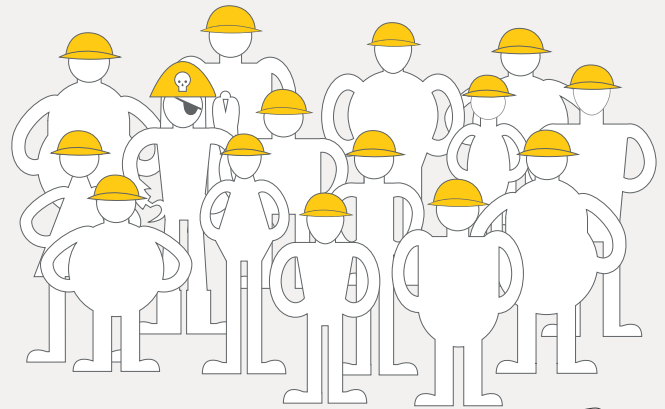
WORK SPACE

Step in to a spacious cab that resets the industry standard for comfort and visibility. A wider air-suspension seat gives you plenty of adjustments, so you can find just the right position. Enjoy more storage space, along with updated heating/cooling to help keep you more comfortable and reduce window fogging/frosting too.

OPERATOR FRIENDLY DISPLAY

New 10-inch (254 mm) touchscreen is easy to use, with a great view of machine settings, rearview camera and Slope Indicate/ Slope Assist screens. Key Features button gives you an overview of machine features, along with some helpful operating tips.

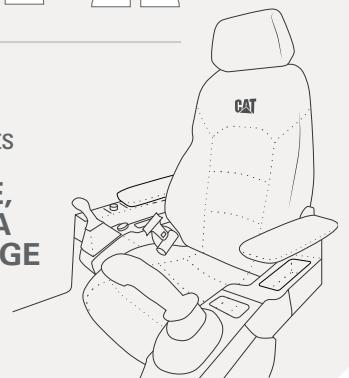
A CAB EVERY BODY CAN LOVE



13 Seat Adjustments*

4 Arm Rest Adjustments

**PLUS MORE SPACE,
MORE GLASS AREA
AND MORE STORAGE**
add up to customized
for all-day productivity



* Premium seat

SEE YOUR WAY TO MORE PRODUCTIVITY

More visibility around the dozer means you can work with more confidence and precision. Easy machine access saves time and helps make the job site safer.



BETTER VIEW

Redesigned cab with integrated Rollover Protective Structure (ROPS) has about 15% more glass area to give you better all-around visibility. A steeper hood angle gives you 30% better forward visibility to the blade and work site.



EXTRA EYES

A High Definition rearview camera is standard. It shows prominently in the main display and includes back-up lines to help guide you.



EASY ACCESS

Standard rear ladder puts fueling, filter changes and rear window cleaning in easy reach. Ground-level access to optional fast fuel fill and maintenance points. Grab rail on both sides of cab roof and tie offs add to your safety.

LESS MAINTENANCE TIME

LOWER MAINTENANCE COST



GET BACK TO WORK

Grouped service points, modular component design and easy access to routine maintenance points save you time every day. If needed, the cab can be removed in about 30 minutes, compared to 4 hours on previous models.

SPEND LESS

Heavier, more robust machine helps increase uptime and reduce overall operating cost. Extended filter life and longer life LED lights help save you time and money. Optional reversible fan helps remove debris while you work, saving cleanout and maintenance time.

GAIN DURABILITY

Hydraulic and electrical lines running to the blade are guarded for better protection. More robust track roller frame gives you added durability to take on heavier work, and new Heavy Duty Extended Life undercarriage – HDXL DuraLink™ – offers up to 20% more seal life in high impact conditions.

All comparisons to previous model D6N.

CAT LINK TECHNOLOGY

TAKES THE GUESSWORK OUT OF MANAGING YOUR EQUIPMENT

CAT LINK telematics technology helps take the complexity out of managing your job sites – by gathering data generated by your equipment, materials, and people – and serving it up to you in customizable formats.

CAT PRODUCT LINK™

Product Link™ collects data automatically and accurately from your assets – any type and any brand. Information such as location, hours, fuel usage, productivity, idle time, maintenance alerts, diagnostic codes, and machine health can be viewed online through web and mobile applications.



VISIONLINK®

Access information anytime, anywhere with VisionLink® – and use it to make informed decisions that boost productivity, lower costs, simplify maintenance, and improve safety and security on your job site. With different subscription level options, your Cat dealer can help you configure exactly what you need to connect your fleet and manage your business, without paying for extras you don't want. Subscriptions are available with cellular or satellite reporting or both.



REMOTE SERVICES

The Cat App helps you manage your assets – at any time – right from your smartphone. See fleet location and hours, get critical required maintenance alerts, and even request service from your local Cat dealer.

- + **Remote Flash** – get software updates to one or more machines remotely. You just need a designated person close to the machine to initiate/confirm the update.
- + **Remote Grade** lets you wirelessly manage site plans via Trimble Connect Services.
- + **Operator ID** lets you track machine operation by individual operator using the main display and Product Link.





EQUIPPED FOR THE JOB

MAXIMIZE YOUR VERSATILITY

PRODUCTIVITY OUT FRONT

Pick a new purpose-built push arm bulldozer with plenty of dirt moving power or a 6-way VPAT blade to maximize your versatility and grading performance.

ON TRACK FOR BETTER PERFORMANCE

Choose from standard or Low Ground Pressure (LGP) configurations. Common structures for Heavy Duty and SystemOne™ undercarriage allow you to change from one undercarriage type to the other.

TOUGHER TRACTORS

Waste Handler, Forestry and Fire Fighting arrangements are purpose-built for optimal performance. Factory guarding, seals and cab features help protect your machine and operator in especially harsh conditions.

TECHNICAL SPECIFICATIONS

See cat.com for complete specifications.

ENGINE	
Engine Model	Cat C7.1
Emissions	U.S. EPA Tier 4 Final/EU Stage V/ Japan 2014 (Tier 4 Final)/ Korea Tier 4 Final
Build Number	17A
Power Train	Fully Automatic 3-Speed
Net Power – 1,770 rpm	
ISO 9249/SAE J1349	127 kW 170 hp
ISO 9249/SAE J1349 (DIN)	172 hp
Displacement	7.1 L 433 in ³
All non-road Tier 4 Interim and Final, Stage IIIB, IV and V, Japan 2014 (Tier 4 Final) and Korea Tier 4 Final diesel engines are required to use only Ultra Low Sulfur Diesel (ULSD) fuels containing 15 ppm EPA/10 ppm EU (mg/kg) sulfur or less. Biodiesel blends up to B20 (20% blend by volume) are acceptable when blended with 15 ppm (mg/kg) sulfur or less ULSD. B20 should meet ASTM D7467 specification (biodiesel blend stock should meet Cat biodiesel spec, ASTM D6751 or EN 14214). Cat DEO-ULS™ or oils that meet the Cat ECF-3, API CJ-4, and ACEA E9 specification are required. Consult your OMM for further machine specific fuel recommendations.	
Diesel Exhaust Fluid (DEF) used in Cat Selective Catalytic Reduction (SCR) systems must meet the requirements outlined in the International Organization for Standardization (ISO) standard 22241.	
The air conditioning system on this machine contains the fluorinated greenhouse gas refrigerant R134a (Global Warming Potential = 1430). The system contains 1.36 kg of refrigerant which has a CO ₂ equivalent of 1.946 metric tonnes.	

SERVICE REFILL CAPACITIES	
Fuel Tank	315 L 83.2 gal
DEF Tank	16 L 4.2 gal

	OPERATING WEIGHT	GROUND PRESSURE*
VPAT	17 180 kg 37,875 lb	47.6 kPa 6.9 psi
LGP VPAT	19 170 kg 42,263 lb	32.6 kPa 4.7 psi
VPAT Fine Grading	17 780 kg 39,198 lb	41.4 kPa 6.0 psi
LGP Folding VPAT	19 440 kg 42,858 lb	32.9 kPa 4.8 psi
SU	17 340 kg 38,228 lb	48.2 kPa 7.0 psi
For machine with ripper, add 1290 kg/2,844 lb.		
*With SU blade, LGP with VPAT blade and no rear attachments unless otherwise specified and calculated per ISO 16754.		

BLADES	CAPACITY	WIDTH
VPAT	3.5 m ³ 4.6 yd ³	3272 mm 10.7 ft
LGP VPAT	4.0 m ³ 5.2 yd ³	4080 mm 13.4 ft
LGP VPAT Foldable	4.2 m ³ 5.5 yd ³	4080 mm 13.4 ft
SU	4.3 m ³ 5.6 yd ³	3164 mm 10.4 ft
SU – Narrow*	— —	3122 mm 10.2 ft
*Europe Only. Width with end bits removed.		

DIMENSIONS*	VPAT	LGP VPAT	VPAT FINE GRADING	SU
Track Gauge	1890 mm (74.4 in)	2160 mm (85.0 in)	1890 mm (74.4 in)	1890 mm (74.4 in)
Width of Standard Shoe	610 mm (24 in)	840 mm (33 in)	610 mm (24 in)	610 mm (24 in)
Width of Tractor	2500 mm (98.4 in)	3000 mm (118.1 in)	2500 mm (98.4 in)	2500 mm (98.4 in)
Machine Height (to ROPS)	3085 mm (121.5 in)	3200 mm (126.0 in)	3200 mm (126.0 in)	3085 mm (121.5 in)
Length of Track on Ground	2562 mm (100.9 in)	3116 mm (122.7 in)	3116 mm (122.7 in)	2562 mm (100.9 in)
Length of Basic Tractor	3680 mm (144.9 in)	4151 mm (163.4 in)	4151 mm (163.4 in)	3680 mm (144.9 in)
With the Following Attachments, Add to Basic Tractor Length				
VPAT Blade, Straight	1336 mm (52.6 in)	1230 mm (48.4 in)	1230 mm (48.4 in)	—
VPAT Blade, Angled 25°	1982 mm (78.0 in)	2049 mm (80.7 in)	1876 mm (73.9 in)	—
VPAT Blade Foldable, Angled 31°	2110 mm (83.1 in)	2214 mm (87.1 in)	2005 mm (78.9 in)	—
SU Blade	—	—	—	1423 mm (56.0 in)
Ripper	1044 mm (41.1 in)	1044 mm (41.1 in)	1044 mm (41.1 in)	1044 mm (41.1 in)
*SystemOne Undercarriage.				

Configurations and features may vary by region. Please consult your Cat dealer for availability in your area.

STANDARD & OPTIONAL EQUIPMENT

Standard and optional equipment may vary. Consult your Cat dealer for details.

POWER TRAIN	STANDARD	OPTIONAL
Cat C7.1 diesel engine	•	
Fully-automatic 3-speed transmission	•	
Infinite ground speed adjustment	•	
OPERATOR ENVIRONMENT	STANDARD	OPTIONAL
Fully redesigned cab, sound suppressed, with Integrated Roll Over Protective Structure (IROPS)	•	
Full-color 10-inch (254 mm) touchscreen display	•	
Integrated rearview camera	•	
Comfort cab with fixed armrests	•	
Premium cab with adjustable armrests		•
Cab mounted modular HVAC system	•	
Added storage areas	•	
Electrohydraulic implement and steering controls	•	
Cloth seat	•	
Deluxe leather heated/ventilated seat		•
Communication radio ready	•	
Lights – 6 LED	•	
Premium lights – 12 LED		•
Integrated warning lights		•
Application Profile	•	
Operator ID/Operator ID with Security	•	
CAT TECHNOLOGY	STANDARD	OPTIONAL
Slope Indicate	•	
ARO with Slope Assist		•
Updated Cat GRADE with 3D		•
Full-color 10-inch (254 mm) touchscreen grade display		•
AutoCarry		•
Updated Stable Blade (included in ARO with Assist)		•
Traction Control		•
Blade Load Monitor		•
Product Link, Cellular PLE742, PLE743	•	
Product Link Elite PLE783 – Dual Cellular/Satellite		•
BLADES	STANDARD	OPTIONAL
VPAT	•	
Semi-Universal	•	
Foldable VPAT		•
Waste/Landfill		•
<i>For a full list of blade offerings, please refer to the D5 Technical Specifications brochure on cat.com.</i>		

UNDERCARRIAGE	STANDARD	OPTIONAL
Heavy Duty (HDXL with DuraLink) or SystemOne	•	
Redesigned track roller frame	•	
Moderate Service or Extreme Service track shoes	•	
<i>For a complete listing of track shoe offerings, please refer to the D5 Technical Specifications brochure on cat.com.</i>		
SERVICE AND MAINTENANCE	STANDARD	OPTIONAL
30-minute cab removal	•	
Ecology drains	•	
Fast fuel fill ready		•
Fast fuel pump		•
Refilling fuel pump (EU only)		•
Ground level service center	•	
High-speed oil change		•
Hydraulic fan	•	
Hydraulic reversing fan		•
Rear access ladder	•	
Remote Flash/Remote Troubleshoot		•
Shovel holder	•	
Underhood work light		•
HYDRAULICS	STANDARD	OPTIONAL
Independent steering and implement pumps	•	
Load sensing hydraulics	•	
ATTACHMENTS	STANDARD	OPTIONAL
Ripper-ready rear hydraulics		•
Ripper with straight or curved shanks		•
Winch		•
Drawbar	•	
Side screens		•
Rear screen – hinged or fixed		•
Sweeps		•
Fine Grading arrangement		•
Forestry and Waste special arrangements		•
Fire Dozer configuration		•

Not all features are available in all regions. Please check with your local Cat dealer for specific offering availability in your area.

For additional information, refer to the Technical Specifications brochure available at www.cat.com or your Cat dealer.

For more complete information on Cat products, dealer services and industry solutions, visit us on the web at www.cat.com

© 2019 Caterpillar. All Rights Reserved.

VisionLink is a trademark of Trimble Navigation Limited, registered in the United States and in other countries.

Materials and specifications are subject to change without notice. Featured machines in photos may include additional equipment. See your Cat dealer for available options.

CAT, CATERPILLAR, LET'S DO THE WORK, their respective logos, "Caterpillar Yellow," the "Power Edge" and Cat "Modern Hex" trade dress as well as corporate and product identity used herein, are trademarks of Caterpillar and may not be used without permission.
www.cat.com www.caterpillar.com

AEXQ2532-01
Replaces AEXQ2532
Build Number: 17A
(North America, Europe,
ANZ, Turkey, Korea)

