

# D3K2/D4K2/D5K2

## Track-Type Tractors



|                                     | D3K2             | D4K2           | D5K2           |
|-------------------------------------|------------------|----------------|----------------|
| <b>Engine Model</b>                 | Cat® C4.4 ACERT™ | Cat C4.4 ACERT | Cat C4.4 ACERT |
| <b>Rated Net Power at 2,200 rpm</b> | 64.2 kW          | 71.3 kW        | 79.0 kW        |
| <b>Weights</b>                      |                  |                |                |
| Operating Weight – XL               | 8200 kg          | 8450 kg        | 9500 kg        |
| Operating Weight – LGP              | 8850 kg          | 8950 kg        | 10 350 kg      |



オフロード法2014年  
基準適合

D3K2, D4K2, D5K2



国土交通省指定  
低騒音型建設機械

D3K2, D5K2



NETIS登録技術

D3K2, D4K2, D5K2



2020年燃費基準

D3K2, D5K2



Simply the  
smoothest  
finish grading  
tractor in  
the industry.  
Period.



**Contents**

Operator Station .....4

Cat GRADE with 3D .....6

Productivity .....7

Serviceability and Customer Support.....8

Engine .....10

Specifications.....11

Standard and Optional Equipment .....17

Special Arrangement Specifications .....18



D3K2

*Machines may vary from photos.*





*D4K2*



*D5K2*



# Operator Station

Everyone can get comfortable in this cab.



## Seat-Mounted Joystick Controls

Ergonomically designed, seat-mounted controls isolate vibrations from the operator for optimum comfort and precise control.

- Contoured armrest cushion
- Bi-directional transmission shifting
- Easy to grip handles
- Heated control handles (optional)



### Stable Blade Control

New Stable Blade control makes operating the machine easy for both new and experienced operators.

- Stable Blade complements operator input for smooth finish grading results
- Handle fits to hand to allow for more precise control and reduce operator fatigue
- Thumb roller for low effort blade angle control
- Blade shake feature for easy removal of material

### All Day Comfort

The spacious, comfortable cab helps keep you relaxed and productive throughout the day.

- Quiet environment – 78 dB(A) – ANSI/SAE J1166 OCT98
- Wide door openings for easy entry/exit
- Dash mounted air vents for improved air circulation
- Air suspension seat for a more comfortable ride
- Air conditioning for greater comfort in all climates
- New ventilated seat (optional)
- Heated seat and heated control handles (optional)

### Monitoring Package

Easy to read display and gauges provide vital system information and conditions. The optional, larger AccuGrade™ CB460 GPS display is available and mounts in line with blade corners for easy viewing.

### Outstanding Visibility

Large door windows provide an unobstructed view to the blade corners and cutting edge which is especially important in fine grading, curbing and working against foundations. Large side windows offer a clear view to the sides of the machine.



ARO Monitor



# Cat GRADE with 3D

Increasing efficiency, maximizing production.

**Cat GRADE with 3D**, available on the D3K2, D4K2 and D5K2, is a factory integrated grade control system that enables operators to improve grading efficiency, accuracy and productivity in both production dozing and fine-grading applications. The integrated design positions antennas on the cab roof, eliminating conventional blade-mounted masts and related cables.

The AccuGrade Ready Option (ARO) is part of the package for added versatility. AutoCarry™ is included to further boost productivity.





# Productivity

Grade with ease and accuracy.

## AccuGrade

A fast machine grade control system which enables operators to cut and fill to grade with increased accuracy, minimizing the need for traditional stakes and grade checkers.

Caterpillar offers a choice of Laser, GNSS or Universal Total Station solutions:

- **AccuGrade Laser** – for two dimensional flat type work
- **AccuGrade GNSS** – for three dimensional cut to contour work
- **Universal Total Station** – for the fine and finish grade applications

## Automatic Traction Control

- Automatically reduces track slippage when machine encounters maximum load conditions by sensing and controlling track speed. As a result, operator blade movement is minimized, delivering greater productivity.
- Enables the operator to load the blade more easily, reducing operator fatigue.
- Improves undercarriage life.

## Slope Indicate

- New, standard equipment provides the slope of the blade in cross slope direction and mainfall (fore/aft) direction without having to estimate, allowing the operator to have more confidence in slope work without guessing.

## Cat Slope Assist™

- New, optional grade control feature which helps the operator more easily achieve the desired blade mainfall and cross slope automatically saving time and materials.
- Allows less experienced operators to achieve better results, more quickly.
- Part of the AccuGrade Ready (ARO) attachment for easy scalability to three-dimensional AccuGrade grade control systems.



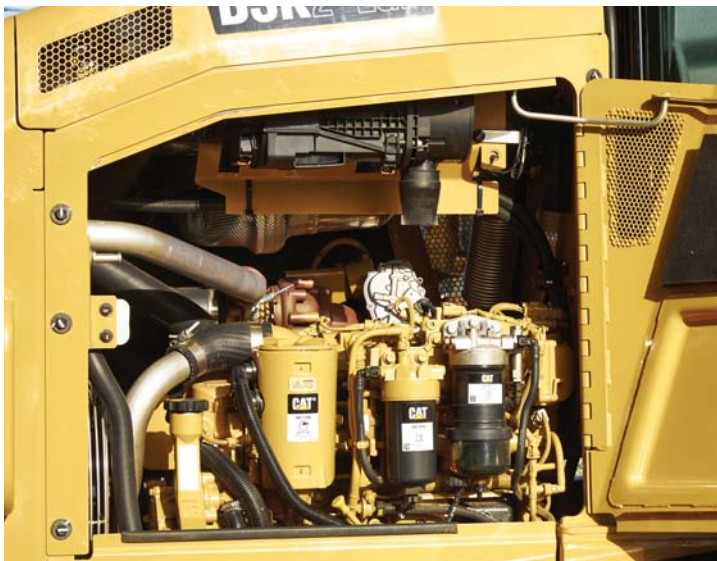
# Serviceability and Customer Support

Easy service and unmatched support keep you working.

## Easy Access

Long service intervals and easy maintenance keep the machine up and running to lower your owning and operating costs.

- Large, hinged door on the left side of the engine compartment for easy access to all regular engine maintenance points
- Grouped pressure taps for quick testing and troubleshooting of the hydraulic system
- Easy ground level access to hydraulic filters located in the left rear service compartment



### ① Service Access Door

- Breather Filter
- Engine Oil Filter
- Fuel Filter
- Air Filter





### **Product Link™/VisionLink®**

Product Link is deeply integrated into your machine to take the guesswork out of equipment management. Easy access to timely information like machine location, hours, fuel usage, idle time and event codes via the online VisionLink user interface can help you effectively manage your fleet and lower operating cost.

② **Diesel Exhaust Fluid (DEF) Tank**

③ **DEF Port**

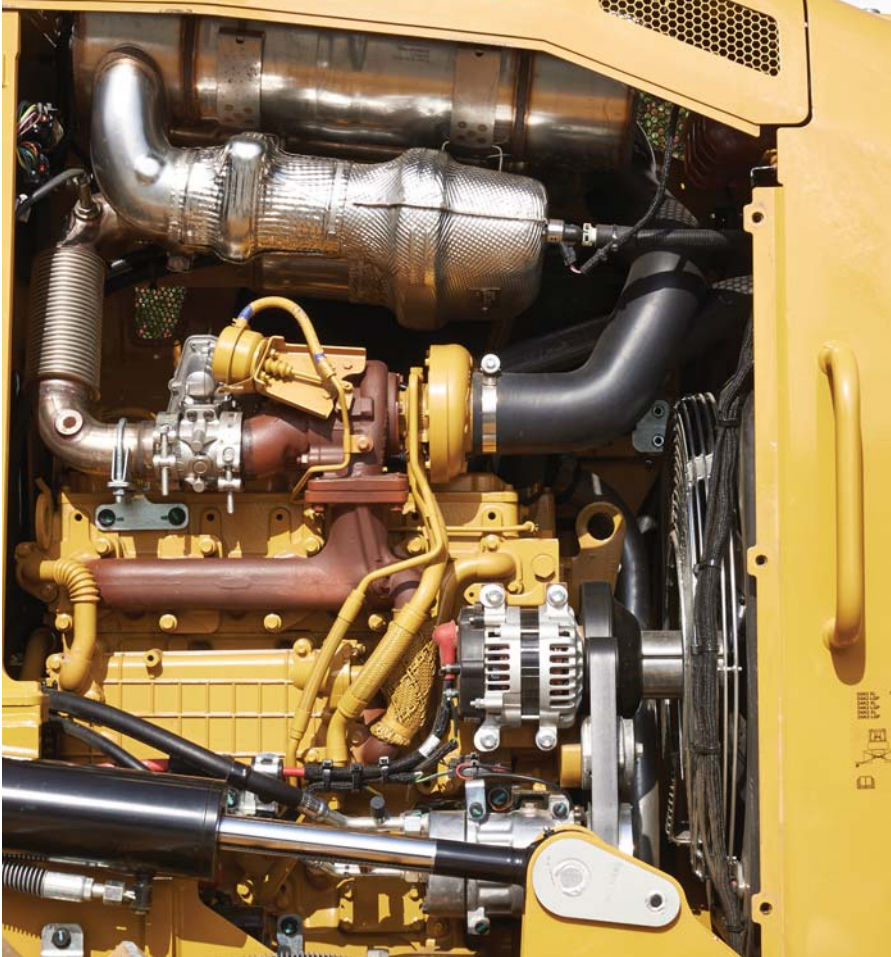
### **④ Right Side Access Door**

- Hydraulic Filter
- Battery Disconnect Switch
- Maintenance Free Batteries



# Engine

Increased horsepower, improved fuel economy.

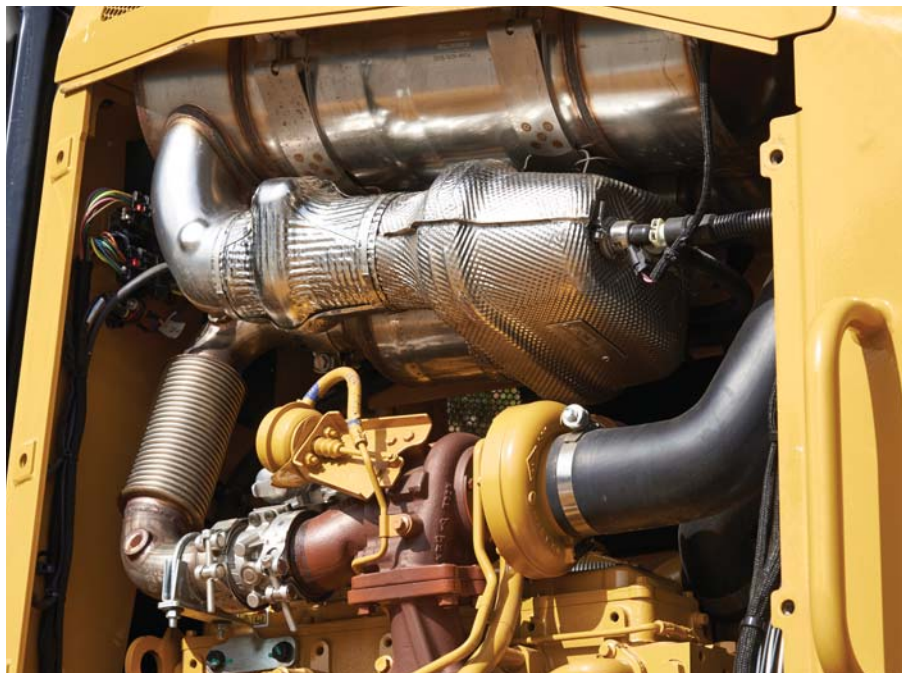


## Cat C4.4 ACERT Engine

The engine responds quickly to changing loads.

Eco mode throttle setting can deliver improved fuel economy by up to 25% for the D3K2, D4K2 and 20% for the D5K2.

Engine uses a passive regeneration solution with a **Selective Catalytic Reduction**, SCR. The SCR reduces the discharge of NO<sub>x</sub> (nitrogen oxide). Urea water is used as a reducing agent.





# D3K2, D4K2, D5K2 Track-Type Tractor Specifications

## Engine

|                             | D3K2           | D4K2           | D5K2           |
|-----------------------------|----------------|----------------|----------------|
| Engine Model                | Cat C4.4 ACERT | Cat C4.4 ACERT | Cat C4.4 ACERT |
| Rated Net Power @ 2,200 rpm | 64.2 kW        | 71.3 kW        | 79.0 kW        |
| Bore                        | 105 mm         | 105 mm         | 105 mm         |
| Stroke                      | 127 mm         | 127 mm         | 127 mm         |
| Displacement                | 4.4 L          | 4.4 L          | 4.4 L          |

## Weights

|                        | D3K2    | D4K2    | D5K2      |
|------------------------|---------|---------|-----------|
| Operating Weight – XL  | 8200 kg | 8450 kg | 9500 kg   |
| Operating Weight – LGP | 8850 kg | 8950 kg | 10 350 kg |

• Specifications shown are for machine equipped with dozer blade, cab ROPS, back-up alarm, operator, coolant, lubricants and full fuel tank.

## Transmission

|                                | D3K2       | D4K2       | D5K2       |
|--------------------------------|------------|------------|------------|
| Drive Pumps                    | 1          | 1          | 1          |
| Track Motors                   | 2          | 2          | 2          |
| Relief Valve Settings          | 48 500 kPa | 48 500 kPa | 48 500 kPa |
| Maximum Travel Speed – Forward | 9 km/h     | 9 km/h     | 9 km/h     |
| Maximum Travel Speed – Reverse | 10 km/h    | 10 km/h    | 10 km/h    |

## Undercarriage

|  | D3K2    | D4K2    | D5K2    |
|--|---------|---------|---------|
| Number of Rollers (each side)  | 6       | 7       | 7       |
| Number of Shoes (each side) – Sealed and Lubricated Track (SALT) Undercarriage | 43      | 43      | 40      |
| Number of Shoes (each side) – SystemOne™ Undercarriage                         | 38      | 38      | 36      |
| Shoe Width – XL  | 405 mm  | 460 mm  | 510 mm  |
| Shoe Width – LGP   | 635 mm  | 635 mm  | 770 mm  |
| Length of Track on Ground – XL   | 2250 mm | 2250 mm | 2310 mm |
| Length of Track on Ground – LGP  | 2250 mm | 2250 mm | 2310 mm |
| Track Gauge – XL   | 1495 mm | 1550 mm | 1600 mm |
| Track Gauge – LGP  | 1725 mm | 1725 mm | 1860 mm |
| Ground Pressure – XL   | 44 kPa  | 41 kPa  | 40 kPa  |
| Ground Pressure – LGP  | 31 kPa  | 31 kPa  | 29 kPa  |

# D3K2, D4K2, D5K2 Track-Type Tractor Specifications

## Service Refill Capacities

|                                 | D3K2  | D4K2  | D5K2  |
|---------------------------------|-------|-------|-------|
| Fuel Tank                       | 195 L | 195 L | 195 L |
| Crankcase and Filter            | 11 L  | 11 L  | 11 L  |
| Final Drives, XL (each side)    | 10 L  | 10 L  | 10 L  |
| Final Drives, LGP (each side)   | 10 L  | 10 L  | 10 L  |
| Cooling System                  | 23 L  | 23 L  | 23 L  |
| Transmission/Hydraulic Tank     | 60 L  | 60 L  | 60 L  |
| Diesel Exhaust Fluid (DEF) Tank | 19 L  | 19 L  | 19 L  |

## Hydraulic Controls

|                       | D3K2       | D4K2       | D5K2       |
|-----------------------|------------|------------|------------|
| Pump Output           | 68 L/min   | 68 L/min   | 68 L/min   |
| Relief Valve Settings | 20 600 kPa | 20 600 kPa | 20 600 kPa |

## Ripper

|                                    | D3K2          | D4K2          | D5K2          |
|------------------------------------|---------------|---------------|---------------|
| Type                               | Parallelogram | Parallelogram | Parallelogram |
| Number of Shanks                   | 3             | 3             | 3             |
| Maximum Digging Depth              | 340 mm        | 340 mm        | 340 mm        |
| Maximum Reach at Ground Line       | 595 mm        | 595 mm        | 555 mm        |
| Maximum Ground Clearance Under Tip | 450 mm        | 450 mm        | 450 mm        |
| Overall Width                      | 1710 mm       | 1710 mm       | 1710 mm       |
| Height                             | 165 mm        | 165 mm        | 165 mm        |
| Weight                             | 555 kg        | 555 kg        | 555 kg        |

## Winch\*

|                                   | D3K2 | D4K2 | D5K2        |
|-----------------------------------|------|------|-------------|
| Weight                            | —    | —    | 610 kg      |
| Winch Drive                       | —    | —    | Hydrostatic |
| Control                           | —    | —    | Hydraulic   |
| Speed                             | —    | —    | Variable    |
| Winch Length                      | —    | —    | 705 mm      |
| Overall Width                     | —    | —    | 740 mm      |
| Drum Diameter                     | —    | —    | 255 mm      |
| Drum Width                        | —    | —    | 275 mm      |
| Throat Clearance                  | —    | —    | 170 mm      |
| Rope Diameter – Recommended       | —    | —    | 16 mm       |
| Rope Diameter – Optional          | —    | —    | 19 mm       |
| Drum Capacity – Recommended Cable | —    | —    | 113 m       |
| Drum Capacity – Optional Cable    | —    | —    | 78 m        |
| Maximum Line Pull – Bare Drum     | —    | —    | 18 145 kg   |
| Maximum Line Pull – Full Drum     | —    | —    | 11 340 kg   |
| Maximum Line Speed – Bare Drum    | —    | —    | 40 m/min    |
| Maximum Line Speed – Full Drum    | —    | —    | 63 m/min    |

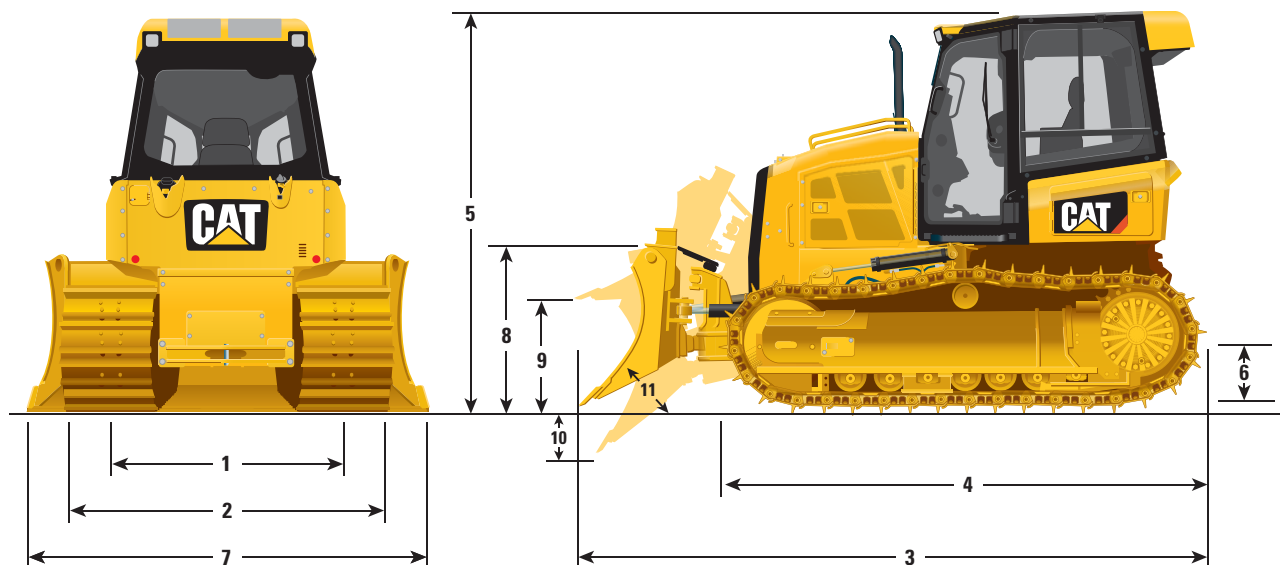
\*Winch includes: front counterweight 300 kg, front and rear side screen, front and rear sweeps, full length guard fairlead.



# D3K2, D4K2, D5K2 Track-Type Tractor Specifications

## Dimensions

All dimensions are approximate.



| Model   | D3K2                | D4K2                | D5K2                |
|---|---------------------|---------------------|---------------------|
| <b>1</b> Track Gauge – XL                                 | 1495 mm             | 1550 mm             | 1600 mm             |
| Track Gauge – LGP   | 1725 mm             | 1725 mm             | 1860 mm             |
| <b>2</b> Width of Tractor (standard shoes, no blade) – XL | 1900 mm             | 2010 mm             | 2110 mm             |
| Width of Tractor (standard shoes, no blade) – LGP         | 2360 mm             | 2360 mm             | 2630 mm             |
| <b>3</b> Overall Length (with blade) – XL                 | 4265 mm             | 4275 mm             | 4310 mm             |
| Overall Length (with blade) – LGP                         | 4255 mm             | 4275 mm             | 4310 mm             |
| <b>4</b> Length of Basic Tractor (without blade)          | 3275 mm             | 3275 mm             | 3265 mm             |
| <b>5</b> Tractor Height – XL                              | 2765 mm             | 2765 mm             | 2770 mm             |
| Tractor Height – LGP                                      | 2790 mm             | 2790 mm             | 2795 mm             |
| <b>6</b> Ground Clearance – XL                            | 320 mm              | 320 mm              | 320 mm              |
| Ground Clearance – LGP                                    | 315 mm              | 315 mm              | 315 mm              |
| <b>Blade</b>  |                     |                     |                     |
| <b>7</b> Blade Width – XL                                 | 2645 mm             | 2780 mm             | 2780 mm             |
| Blade Width – LGP   | 3150 mm             | 3150 mm             | 3220 mm             |
| <b>8</b> Blade Height – XL                                | 910 mm              | 1010 mm             | 1075 mm             |
| Blade Height – LGP  | 860 mm              | 910 mm              | 1010 mm             |
| <b>9</b> Blade Lift Height – XL                           | 730 mm              | 745 mm              | 770 mm              |
| Blade Lift Height – LGP                                   | 720 mm              | 735 mm              | 760 mm              |
| <b>10</b> Digging Depth – XL                              | 575 mm              | 575 mm              | 585 mm              |
| Digging Depth – LGP                                       | 585 mm              | 585 mm              | 595 mm              |
| <b>11</b> Blade Cutting Edge Angle, Adjustable            | 52° to 58°          | 52° to 58°          | 52° to 58°          |
| Maximum Tilt – XL   | 370 mm              | 385 mm              | 400 mm              |
| Maximum Tilt – LGP  | 440 mm              | 440 mm              | 450 mm              |
| Maximum Angle (either side)                               | 24°                 | 24°                 | 24°                 |
| Blade Width at Maximum Angle – XL                         | 2420 mm             | 2545 mm             | 2545 mm             |
| Blade Width at Maximum Angle – LGP                        | 2880 mm             | 2880 mm             | 2945 mm             |
| Blade Capacity (SAE) – XL                                 | 1.52 m <sup>3</sup> | 1.98 m <sup>3</sup> | 2.19 m <sup>3</sup> |
| Blade Capacity (SAE) – LGP                                | 1.66 m <sup>3</sup> | 1.85 m <sup>3</sup> | 2.34 m <sup>3</sup> |

# D3K2 Track-Type Tractor Specifications

## D3K2 Track-Type Tractor Specifications

|                         |   |                            | XL<br>ARO<br>(2D) | LGP<br>ARO<br>(2D) | XL<br>ARO<br>(3D) | LGP<br>ARO<br>(3D) | XL | LGP |
|-------------------------|---|----------------------------|-------------------|--------------------|-------------------|--------------------|----|-----|
| <b>Blade</b>            | VPAT Blade (for AccuGrade)  | W2645×H910                 | ●                 | —                  | ●                 | —                  | —  | —   |
|                         | VPAT Blade  | W2645×H910                 | —                 | —                  | —                 | —                  | ●  | —   |
|                         | VPAT Blade (for AccuGrade)  | W3150×H860                 | —                 | ●                  | —                 | ●                  | —  | —   |
|                         | VPAT Blade  | W3150×H860                 | —                 | —                  | —                 | —                  | —  | ●   |
|                         | VPAT Intermediate Blade (for AccuGrade)   | W2920×H860                 | ○                 | ○                  | ○                 | ○                  | —  | —   |
|                         | VPAT Intermediate Blade   | W2920×H860                 | —                 | —                  | —                 | —                  | ○  | ○   |
| <b>Blade Control</b>    | Mechanical Blade Pitch  |                            | ●                 | ●                  | ●                 | ●                  | ●  | ●   |
|                         | Power Blade Pitch   |                            | ○                 | ○                  | ○                 | ○                  | ○  | ○   |
| <b>GRADE Technology</b> | Slope Indicate  |                            | ●                 | ●                  | ●                 | ●                  | ●  | ●   |
|                         | Cat GRADE with Slope Assist   |                            | ●                 | ●                  | ●                 | ●                  | —  | —   |
|                         | Cat GRADE with 3D   |                            | —                 | —                  | ●                 | ●                  | —  | —   |
|                         | AccuGrade Ready Option (ARO)  |                            | ●                 | ●                  | ●                 | ●                  | —  | —   |
| <b>Rear Camera</b>      |   |                            | ●                 | ●                  | ●                 | ●                  | ○  | ○   |
| <b>Undercarriage</b>    | SALT  |                            | ●                 | ●                  | ●                 | ●                  | ●  | ●   |
|                         | Rolling Bush SystemOne  |                            | ○                 | ○                  | ○                 | ○                  | ○  | ○   |
| <b>Track</b>            | SALT  | 405 mm Single Grouser Shoe | ●                 | ○                  | ●                 | ○                  | ●  | ○   |
|                         |   | 635 mm Single Grouser Shoe | —                 | ●                  | —                 | ●                  | —  | ●   |
|                         |   | 635 mm Curve APEX Shoe     | —                 | ○                  | —                 | ○                  | —  | ○   |
|                         | SystemOne   | 405 mm Single Grouser Shoe | ○                 | ○                  | ○                 | ○                  | ○  | ○   |
|                         |   | 635 mm Single Grouser Shoe | —                 | ○                  | —                 | ○                  | —  | ○   |
| <b>Operator Station</b> | ROPS Cab (air conditioner)  |                            | ●                 | ●                  | ●                 | ●                  | ●  | ●   |
|                         | ROPS Cab (polycarbonate with air conditioner)                                   |                            | ○                 | ○                  | ○                 | ○                  | ○  | ○   |
|                         | ROPS Canopy (heater)  |                            | ○                 | ○                  | ○                 | ○                  | ○  | ○   |
| <b>Monitor</b>          | Standard Monitor  |                            | —                 | —                  | —                 | —                  | ●  | ●   |
|                         | ARO Monitor   |                            | ●                 | ●                  | ●                 | ●                  | ○  | ○   |
|                         | Cat GRADE Control Monitor   |                            | —                 | —                  | ●                 | ●                  | —  | —   |
| <b>Seat</b>             | Air Suspension Seat (fabric)  |                            | ●                 | ●                  | ●                 | ●                  | ●  | ●   |
|                         | Air Suspension, Heated Seat (fabric) Heated Control Handles                     |                            | ○                 | ○                  | ○                 | ○                  | ○  | ○   |
|                         | Air Suspension, Ventilated and Heated Seat (fabric) with Heated Control Handles |                            | ○                 | ○                  | ○                 | ○                  | ○  | ○   |
|                         | Air Suspension Seat (vinyl)   |                            | ○                 | ○                  | ○                 | ○                  | ○  | ○   |
|                         | Air Suspension, Heated Seat (vinyl) with Heated Control Handles                 |                            | ○                 | ○                  | ○                 | ○                  | ○  | ○   |
| <b>Guard</b>            | Radiator Grill (Standard)   |                            | ●                 | ●                  | ●                 | ●                  | ●  | ●   |
|                         | Radiator Grill (Heavy Duty)   |                            | ○                 | ○                  | ○                 | ○                  | ○  | ○   |
|                         | Rear Guard  |                            | ○                 | ○                  | ○                 | ○                  | ○  | ○   |
|                         | Bottom Guard (XL Standard)  |                            | ●                 | —                  | ●                 | —                  | ●  | —   |
|                         | Bottom Guard (XL Heavy Duty)  |                            | ○                 | —                  | ○                 | —                  | ○  | —   |
|                         | Bottom Guard (LGP Standard)   |                            | —                 | ●                  | —                 | ●                  | —  | ●   |
|                         | Bottom Guard (LGP Heavy Duty)   |                            | —                 | ○                  | —                 | ○                  | —  | ○   |
|                         | Full Length Guard (SALT)  |                            | ○                 | ○                  | ○                 | ○                  | ○  | ○   |
|                         | Full Length Guard (SystemOne)   |                            | ○                 | ○                  | ○                 | ○                  | ○  | ○   |
|                         | Center Track Guard (SALT)   |                            | ○                 | ○                  | ○                 | ○                  | ○  | ○   |
|                         | Center Track Guard (SystemOne)  |                            | ○                 | ○                  | ○                 | ○                  | ○  | ○   |

● Standard Equipment      ○ Optional Equipment      — Not available



# D4K2 Track-Type Tractor Specifications

## D4K2 Track-Type Tractor Specifications

|                         |   |                            | XL<br>ARO<br>(2D) | LGP<br>ARO<br>(2D) | XL<br>ARO<br>(3D) | LGP<br>ARO<br>(3D) | XL | LGP |
|-------------------------|---|----------------------------|-------------------|--------------------|-------------------|--------------------|----|-----|
| <b>Blade</b>            | VPAT Blade (for AccuGrade)  | W2780×H1010                | ●                 | —                  | ●                 | —                  | —  | —   |
|                         | VPAT Blade  | W2780×H1010                | —                 | —                  | —                 | —                  | ●  | —   |
|                         | VPAT Blade (for AccuGrade)  | W3150×H910                 | —                 | ●                  | —                 | ●                  | —  | —   |
|                         | VPAT Blade  | W3150×H910                 | —                 | —                  | —                 | —                  | —  | ●   |
|                         | VPAT Intermediate Blade (for AccuGrade)   | W2920×H860                 | ○                 | ○                  | ○                 | ○                  | —  | —   |
|                         | VPAT Intermediate Blade   | W2920×H860                 | —                 | —                  | —                 | —                  | ○  | ○   |
| <b>Blade Control</b>    | Mechanical Blade Pitch  |                            | ●                 | ●                  | ●                 | ●                  | ●  | ●   |
|                         | Power Blade Pitch   |                            | ○                 | ○                  | ○                 | ○                  | ○  | ○   |
| <b>GRADE Technology</b> | Slope Indicate  |                            | ●                 | ●                  | ●                 | ●                  | ●  | ●   |
|                         | Cat GRADE with Slope Assist   |                            | ●                 | ●                  | ●                 | ●                  | —  | —   |
|                         | Cat GRADE with 3D   |                            | —                 | —                  | ●                 | ●                  | —  | —   |
|                         | AccuGrade Ready Option (ARO)  |                            | ●                 | ●                  | ●                 | ●                  | —  | —   |
| <b>Rear Camera</b>      |   |                            | ●                 | ●                  | ●                 | ●                  | ○  | ○   |
| <b>Undercarriage</b>    | SALT  |                            | ●                 | ●                  | ●                 | ●                  | ●  | ●   |
|                         | Rolling Bush SystemOne  |                            | ○                 | ○                  | ○                 | ○                  | ○  | ○   |
| <b>Track</b>            | SALT  | 460 mm Single Grouser Shoe | ●                 | ○                  | ●                 | ○                  | ●  | ○   |
|                         |   | 635 mm Single Grouser Shoe | —                 | ●                  | —                 | ●                  | —  | ●   |
|                         |   | 635 mm Curve APEX Shoe     | —                 | ○                  | —                 | ○                  | —  | ○   |
|                         | SystemOne   | 460 mm Single Grouser Shoe | ○                 | ○                  | ○                 | ○                  | ○  | ○   |
|                         |   | 635 mm Single Grouser Shoe | —                 | ○                  | —                 | ○                  | —  | ○   |
| <b>Operator Station</b> | ROPS Cab (air conditioner)  |                            | ●                 | ●                  | ●                 | ●                  | ●  | ●   |
|                         | ROPS Cab (polycarbonate with air conditioner)                                   |                            | ○                 | ○                  | ○                 | ○                  | ○  | ○   |
|                         | ROPS Canopy (heater)  |                            | ○                 | ○                  | ○                 | ○                  | ○  | ○   |
| <b>Monitor</b>          | Standard Monitor  |                            | —                 | —                  | —                 | —                  | ●  | ●   |
|                         | ARO Monitor   |                            | ●                 | ●                  | ●                 | ●                  | ○  | ○   |
|                         | Cat GRADE Control Monitor   |                            | —                 | —                  | ●                 | ●                  | —  | —   |
| <b>Seat</b>             | Air Suspension Seat (fabric)  |                            | ●                 | ●                  | ●                 | ●                  | ●  | ●   |
|                         | Air Suspension, Heated Seat (fabric) Heated Control Handles                     |                            | ○                 | ○                  | ○                 | ○                  | ○  | ○   |
|                         | Air Suspension, Ventilated and Heated Seat (fabric) with Heated Control Handles |                            | ○                 | ○                  | ○                 | ○                  | ○  | ○   |
|                         | Air Suspension Seat (vinyl)   |                            | ○                 | ○                  | ○                 | ○                  | ○  | ○   |
|                         | Air Suspension, Heated Seat (vinyl) with Heated Control Handles                 |                            | ○                 | ○                  | ○                 | ○                  | ○  | ○   |
| <b>Guard</b>            | Radiator Grill (Standard)   |                            | ●                 | ●                  | ●                 | ●                  | ●  | ●   |
|                         | Radiator Grill (Heavy Duty)   |                            | ○                 | ○                  | ○                 | ○                  | ○  | ○   |
|                         | Rear Guard  |                            | ○                 | ○                  | ○                 | ○                  | ○  | ○   |
|                         | Bottom Guard (XL Standard)  |                            | ●                 | —                  | ●                 | —                  | ●  | —   |
|                         | Bottom Guard (XL Heavy Duty)  |                            | ○                 | —                  | ○                 | —                  | ○  | —   |
|                         | Bottom Guard (LGP Standard)   |                            | —                 | ●                  | —                 | ●                  | —  | ●   |
|                         | Bottom Guard (LGP Heavy Duty)   |                            | —                 | ○                  | —                 | ○                  | —  | ○   |
|                         | Full Length Guard (SALT)  |                            | ○                 | ○                  | ○                 | ○                  | ○  | ○   |
|                         | Full Length Guard (SystemOne)   |                            | ○                 | ○                  | ○                 | ○                  | ○  | ○   |
|                         | Center Track Guard (SALT)   |                            | ○                 | ○                  | ○                 | ○                  | ○  | ○   |
|                         | Center Track Guard (SystemOne)  |                            | ○                 | ○                  | ○                 | ○                  | ○  | ○   |

● Standard Equipment    ○ Optional Equipment    — Not available

# D5K2 Track-Type Tractor Specifications

## D5K2 Track-Type Tractor Specifications

|                         |   |                            | XL<br>ARO<br>(2D) | LGP<br>ARO<br>(2D) | XL<br>ARO<br>(3D) | LGP<br>ARO<br>(3D) | XL | LGP |
|-------------------------|---|----------------------------|-------------------|--------------------|-------------------|--------------------|----|-----|
| <b>Blade</b>            | VPAT Blade (for AccuGrade)  | W2780×H1075                | ●                 | —                  | ●                 | —                  | —  | —   |
|                         | VPAT Blade  | W2780×H1075                | —                 | —                  | —                 | —                  | ●  | —   |
|                         | VPAT Blade (for AccuGrade)  | W3220×H1010                | —                 | ●                  | —                 | ●                  | —  | —   |
|                         | VPAT Blade  | W3220×H1010                | —                 | —                  | —                 | —                  | —  | ●   |
|                         | VPAT Intermediate Blade (for AccuGrade)   | W2920×H1010                | ○                 | ○                  | ○                 | ○                  | —  | —   |
|                         | VPAT Intermediate Blade   | W2920×H1010                | —                 | —                  | —                 | —                  | ○  | ○   |
| <b>Blade Control</b>    | Mechanical Blade Pitch  |                            | ●                 | ●                  | ●                 | ●                  | ●  | ●   |
|                         | Power Blade Pitch   |                            | ○                 | ○                  | ○                 | ○                  | ○  | ○   |
| <b>GRADE Technology</b> | Slope Indicate  |                            | ●                 | ●                  | ●                 | ●                  | ●  | ●   |
|                         | Cat GRADE with Slope Assist   |                            | ●                 | ●                  | ●                 | ●                  | —  | —   |
|                         | Cat GRADE with 3D   |                            | —                 | —                  | ●                 | ●                  | —  | —   |
|                         | AccuGrade Ready Option (ARO)  |                            | ●                 | ●                  | ●                 | ●                  | —  | —   |
| <b>Rear Camera</b>      |   |                            | ●                 | ●                  | ●                 | ●                  | ○  | ○   |
| <b>Undercarriage</b>    | SALT  |                            | ●                 | ●                  | ●                 | ●                  | ●  | ●   |
|                         | Rolling Bush SystemOne  |                            | ○                 | ○                  | ○                 | ○                  | ○  | ○   |
| <b>Track</b>            | SALT  | 510 mm Single Grouser Shoe | ●                 | ○                  | ●                 | ○                  | ●  | ○   |
|                         |   | 760 mm Single Grouser Shoe | —                 | ●                  | —                 | ●                  | —  | ●   |
|                         |   | 770 mm Curve APEX Shoe     | —                 | ○                  | —                 | ○                  | —  | ○   |
|                         | SystemOne   | 510 mm Single Grouser Shoe | ○                 | ○                  | ○                 | ○                  | ○  | ○   |
|                         |   | 760 mm Single Grouser Shoe | —                 | ○                  | —                 | ○                  | —  | ○   |
|                         |   |                            |                   |                    |                   |                    |    |     |
| <b>Operator Station</b> | ROPS Cab (air conditioner)  |                            | ●                 | ●                  | ●                 | ●                  | ●  | ●   |
|                         | ROPS Cab (polycarbonate with air conditioner)                                   |                            | ○                 | ○                  | ○                 | ○                  | ○  | ○   |
|                         | ROPS Canopy (heater)  |                            | ○                 | ○                  | ○                 | ○                  | ○  | ○   |
| <b>Monitor</b>          | Standard Monitor  |                            | —                 | —                  | —                 | —                  | ●  | ●   |
|                         | ARO Monitor   |                            | ●                 | ●                  | ●                 | ●                  | ○  | ○   |
|                         | Cat GRADE Control Monitor   |                            | —                 | —                  | ●                 | ●                  | —  | —   |
| <b>Seat</b>             | Air Suspension Seat (fabric)  |                            | ●                 | ●                  | ●                 | ●                  | ●  | ●   |
|                         | Air Suspension, Heated Seat (fabric) Heated Control Handles                     |                            | ○                 | ○                  | ○                 | ○                  | ○  | ○   |
|                         | Air Suspension, Ventilated and Heated Seat (fabric) with Heated Control Handles |                            | ○                 | ○                  | ○                 | ○                  | ○  | ○   |
|                         | Air Suspension Seat (vinyl)   |                            | ○                 | ○                  | ○                 | ○                  | ○  | ○   |
|                         | Air Suspension, Heated Seat (vinyl) with Heated Control Handles                 |                            | ○                 | ○                  | ○                 | ○                  | ○  | ○   |
| <b>Guard</b>            | Radiator Grill (Standard)   |                            | ●                 | ●                  | ●                 | ●                  | ●  | ●   |
|                         | Radiator Grill (Heavy Duty)   |                            | ○                 | ○                  | ○                 | ○                  | ○  | ○   |
|                         | Rear Guard  |                            | ○                 | ○                  | ○                 | ○                  | ○  | ○   |
|                         | Bottom Guard (XL Standard)  |                            | ●                 | —                  | ●                 | —                  | ●  | —   |
|                         | Bottom Guard (XL Heavy Duty)  |                            | ○                 | —                  | ○                 | —                  | ○  | —   |
|                         | Bottom Guard (LGP Standard)   |                            | —                 | ●                  | —                 | ●                  | —  | ●   |
|                         | Bottom Guard (LGP Heavy Duty)   |                            | —                 | ○                  | —                 | ○                  | —  | ○   |
|                         | Full Length Guard (SALT)  |                            | ○                 | ○                  | ○                 | ○                  | ○  | ○   |
|                         | Full Length Guard (SystemOne)   |                            | ○                 | ○                  | ○                 | ○                  | ○  | ○   |
|                         | Center Track Guard (SALT)   |                            | ○                 | ○                  | ○                 | ○                  | ○  | ○   |
|                         | Center Track Guard (SystemOne)  |                            | ○                 | ○                  | ○                 | ○                  | ○  | ○   |

● Standard Equipment      ○ Optional Equipment      — Not available



# D3K2, D4K2, D5K2 Standard and Optional Equipment

## Standard Equipment

Standard equipment may vary. Consult your Cat dealer for details.

### POWER TRAIN

- Cat C4.4 ACERT diesel engine, turbocharged
- Aftercooler, Air-to-Air (ATAAC)
- Aluminum bar plate cooling system (radiator, power train)
- Air cleaner with precleaner, automatic dust ejection and under-hood intake
- Dual path, closed-loop hydrostatic transmission
- Electric fuel priming pump
- Fuel/water separator
- Automatic Traction Control
- Auto idling stop (NETIS)

### HYDRAULICS

- Hydraulics, three valve
- Load sensing hydraulics
- Stable blade control

### ELECTRICAL

- Brushless alternator (120 A)
- Backup alarm
- Maintenance free batteries
- Diagnostic connector
- Horn, electric
- Lights, halogen, two front and two rear
- Starter motor (12V)

### OPERATOR STATION

- Seatbelt, retractable 76 mm
- Foot rest
- Gauges
  - Engine coolant temperature,
  - Hydraulic oil temperature
  - Fuel level
  - Diesel exhaust fluid level
- Travel speed limiter, electronic
- Engine RPM and gear display
- Hour meter, electric
- Engine air cleaner service indicator, electronic
- Water-in-fuel indicator, electronic
- Throttle switch, rotary
- Eco mode
- Controls, seat mounted, fore/aft adjustment
- Armrests, adjustable
- Mirror, rearview, inside
- Single pedal combining deceleration and braking functions
- Independent forward/reverse speed settings
- Power port, 12V
- Coat hook
- Storage compartment
- Cup holder
- Floor mat, rubber, heavy duty
- Radio, AM/FM, Bluetooth®

### UNDERCARRIAGE

- Six roller track frame (D3K2)
- Seven roller track frame (D4K2, D5K2)
- Track rollers
- Carrier rollers
- Track adjusters, hydraulic
- Guiding guards, front/rear
- Master link

### OTHER STANDARD EQUIPMENT

- Cat Product Link PL641 Cellular
- Lockable engine enclosures
- Front pull device
- Rigid drawbar (short type)
- Ecology drains (engine, power train and implement oil and engine coolant)
- Scheduled oil sampling ports (engine, power train implement oil)

### ANTIFREEZE

- Extended life coolant, –37° C

## Optional Equipment

Optional equipment may vary. Consult your Cat dealer for details.

### HYDRAULICS

- Hydraulics, four valve for use with ripper
- Hydraulics, four valve for use with winch

### GUARDS

- Rear screen, cab
- Side screen, cab
- Rear screen, canopy
- Front and doors screen, canopy
- Front sweeps
- Rear sweeps

### REAR ATTACHMENTS

- Drawbar, towing (long type)
- Ripper, parallelogram, includes three shanks and teeth

### REAR ATTACHMENT CONTROL

- Control, ripper
- Control, winch (D5K2)

### STARTING AIDS

- Heater, engine, coolant, 120V
- Starting aid, ether

### OTHER ATTACHMENTS

- Front counterweight (300 kg)
- Machine Security System (MSS)

### ANTIFREEZE

- Extended life coolant, –50° C

# D3K2, D5K2 Special Arrangement Specifications

## D3K2 Super-Super LGP



Excellent stability and high work efficiency are demonstrated in super soft ground such as farm land consolidation. The AccuGrade Ready Option\* (ARO) is part of the package for added versatility.

\*Varies depending on the specifications.

### Specifications

|                             |         |
|-----------------------------|---------|
| Operating Weight            | 9775 kg |
| Overall Length (with blade) | 4650 mm |
| Overall Width               | 3470 mm |
| Height                      | 2790 mm |
| Shoe Width                  | 990 mm  |
| Length of Track on Ground   | 2940 mm |
| Ground Pressure             | 16 kPa  |
| Blade Width                 | 3470 mm |
| Blade Height                | 695 mm  |

## D3K2 XL/LGP, D5K2 XL Two Way Dozer



| Specifications*             | D3K2 XL | D3K2 LGP | D5K2 XL   |
|-----------------------------|---------|----------|-----------|
| Operating Weight            |         |          |           |
| Open Platform               | 8200 kg | 8645 kg  | 9670 kg   |
| ROPS Cab                    | 8555 kg | 9000 kg  | 10 025 kg |
| ROPS Canopy                 | 8330 kg | 8775 kg  | 9800 kg   |
| Overall Length (with blade) | 4850 mm | 4850 mm  | 4950 mm   |
| Width of Tractor            | 1900 mm | 2360 mm  | 2110 mm   |
| Height                      |         |          |           |
| Open Platform               | 2275 mm | 2275 mm  | 2275 mm   |
| ROPS Cab                    | 2765 mm | 2765 mm  | 2770 mm   |
| ROPS Canopy                 | 2765 mm | 2765 mm  | 2770 mm   |
| Blade Width                 | 2395 mm | 2675 mm  | 2575 mm   |
| Blade Height                | 875 mm  | 875 mm   | 950 mm    |

\*Machine consists of an Inside arm type two-way blade rear guard with lifting eye, bottom guard with small window for cleaning, retractable radiator grill, center track guard and perforated shoe.

## D5K2 Winch



| Specifications              | D5K2 XL   | D5K2 LGP  |
|-----------------------------|-----------|-----------|
| Operating Weight            | 11 270 kg | 11 780 kg |
| Overall Length (with blade) | 4950 mm   | 4950 mm   |
| Width of Tractor            | 2110 mm   | 2620 mm   |
| Height                      | 2830 mm   | 2855 mm   |
| Blade Width                 | 2780 mm   | 3220 mm   |
| Blade Height                | 1075 mm   | 1010 mm   |
| Ground Pressure             | 48 kPa    | 34 kPa    |



# D3K2, D5K2 Track-Type Tractor Specifications

## Special Machine Arrangement Specifications

|                         |   |             | D3K2                 |                               |                           |                            | D5K2                      |             |              |
|-------------------------|---|-------------|----------------------|-------------------------------|---------------------------|----------------------------|---------------------------|-------------|--------------|
|                         |   |             | SSLGP<br>ARO<br>(2D) | SSLGP<br>ARO<br>Blade<br>Less | XL<br>Two<br>Way<br>Dozer | LGP<br>Two<br>Way<br>Dozer | XL<br>Two<br>Way<br>Dozer | XL<br>Winch | LGP<br>Winch |
| <b>Blade</b>            | Straight Tilt Blade   | W3470×H695  | ●                    | —                             | —                         | —                          | —                         | —           | —            |
|                         | Two Way Dozer Blade (for XL)  | W2395×H875  | —                    | —                             | ●                         | —                          | —                         | —           | —            |
|                         | Two Way Dozer Blade (for LGP)   | W2675×H875  | —                    | —                             | —                         | ●                          | —                         | —           | —            |
|                         | Two Way Dozer Blade (for XL)  | W2575×H950  | —                    | —                             | —                         | —                          | ●                         | —           | —            |
|                         | VPAT Blade  | W2780×H1075 | —                    | —                             | —                         | —                          | —                         | ●           | —            |
|                         | VPAT Blade  | W3220×H1010 | —                    | —                             | —                         | —                          | —                         | —           | ●            |
|                         | VPAT Blade (with Brush Guard)   | W2780×H1075 | —                    | —                             | —                         | —                          | —                         | ○           | —            |
| <b>GRADE Technology</b> | Slope Indicate  |             | ●                    | ●                             | ●                         | ●                          | ●                         | ●           | ●            |
|                         | Cat GRADE with Slope Assist   |             | ●                    | —                             | —                         | —                          | —                         | ○           | ○            |
|                         | Cat GRADE with 3D   |             | —                    | —                             | —                         | —                          | —                         | ○           | ○            |
|                         | AccuGrade Ready Option (ARO)  |             | ●                    | ●                             | —                         | —                          | —                         | ○           | ○            |
| <b>Rear Camera</b>      |   |             | ○                    | ○                             | —                         | —                          | —                         | ○           | ○            |
| <b>Monitor</b>          | Standard Monitor  |             | —                    | —                             | ●                         | ●                          | ●                         | ●           | ●            |
|                         | ARO Monitor   |             | ●                    | ●                             | —                         | —                          | —                         | ○           | ○            |
|                         | Cat GRADE Control Monitor   |             | —                    | —                             | —                         | —                          | —                         | ○           | ○            |
| <b>Undercarriage</b>    | SALT  |             | ●                    | ●                             | ●                         | ●                          | ●                         | ●           | ●            |
|                         | Rolling Bush SystemOne  |             | —                    | —                             | —                         | —                          | —                         | —           | —            |
| <b>Track SALT</b>       | 990 mm Curve APEX Shoe  |             | ●                    | ●                             | —                         | —                          | —                         | —           | —            |
|                         | 405 mm Single Grouser Shoe Center Hole  |             | —                    | —                             | ●                         | —                          | —                         | —           | —            |
|                         | 510 mm Single Grouser Shoe Center Hole  |             | —                    | —                             | —                         | —                          | ●                         | —           | —            |
|                         | 635 mm Single Grouser Shoe Center Hole  |             | —                    | —                             | —                         | ●                          | —                         | —           | —            |
|                         | 510 mm Single Grouser Shoe  |             | —                    | —                             | —                         | —                          | —                         | ●           | ○            |
|                         | 760 mm Single Grouser Shoe  |             | —                    | —                             | —                         | —                          | —                         | —           | ●            |
| <b>Operator Station</b> | ROPS Cab (air conditioner)  |             | ●                    | ●                             | ○                         | ○                          | ○                         | ●           | ●            |
|                         | ROPS Cab (polycarbonate with air conditioner)                                   |             | —                    | —                             | —                         | —                          | —                         | ○           | ○            |
|                         | ROPS Canopy (heater)  |             | —                    | —                             | ○                         | ○                          | ○                         | —           | —            |
|                         | Open Platform   |             | —                    | —                             | ●                         | ●                          | ●                         | —           | —            |
| <b>Seat</b>             | Air Suspension Seat (fabric)  |             | ●                    | ●                             | ○                         | ○                          | ○                         | ○           | ○            |
|                         | Air Suspension, Heated Seat (fabric) Heated Control Handles                     |             | —                    | —                             | —                         | —                          | —                         | ●           | ●            |
|                         | Air Suspension, Ventilated and Heated Seat (fabric) with Heated Control Handles |             | —                    | —                             | —                         | —                          | —                         | ○           | ○            |
|                         | Air Suspension Seat (vinyl)   |             | —                    | —                             | ●                         | ●                          | ●                         | ○           | ○            |
|                         | Air Suspension, Heated Seat (vinyl) with Heated Control Handles                 |             | —                    | —                             | —                         | —                          | —                         | ○           | ○            |
| <b>Guard</b>            | Guards (radiator grill, rear, bottom)   |             | —                    | —                             | ●                         | ●                          | ●                         | —           | —            |
|                         | Radiator Grill (Heavy Duty)   |             | —                    | —                             | —                         | —                          | —                         | ●           | ●            |
|                         | Rear Guard  |             | —                    | —                             | —                         | —                          | —                         | ●           | ●            |
|                         | Bottom Guard (XL Heavy Duty)  |             | —                    | —                             | —                         | —                          | —                         | ●           | —            |
|                         | Bottom Guard (LGP Heavy Duty)   |             | —                    | —                             | —                         | —                          | —                         | —           | ●            |
|                         | Full Length Guard   |             | —                    | —                             | —                         | —                          | —                         | ●           | ●            |
|                         | Front and Rear Sweep  |             | —                    | —                             | —                         | —                          | —                         | ●           | ●            |
|                         | Cab Side and Rear Screen  |             | —                    | —                             | —                         | —                          | —                         | ●           | ●            |
|                         | Winch (includes winch mount)  |             | —                    | —                             | —                         | —                          | —                         | ●           | ●            |
| <b>Other Equipment</b>  | Fairlead  |             | —                    | —                             | —                         | —                          | —                         | ●           | ●            |
|                         | Front Counterweight (300 kg)  |             | —                    | —                             | —                         | —                          | —                         | ●           | ●            |
|                         | Heater, Engine, Coolant, 120V   |             | —                    | —                             | —                         | —                          | —                         | ●           | ●            |
|                         | Starting Aid, Ether   |             | —                    | —                             | —                         | —                          | —                         | ●           | ●            |
|                         | Antifreeze Extended Life Coolant, -50° C  |             | —                    | —                             | —                         | —                          | —                         | ●           | ●            |

Package: ● Standard Equipment ○ Selectable — Not available

For more complete information on Cat products, dealer services, and industry solutions, visit us on the web at [www.cat.com](http://www.cat.com)

© 2017 Caterpillar  
All rights reserved

Materials and specifications are subject to change without notice. Featured machines in photos may include additional equipment. See your Cat dealer for available options.

CAT, CATERPILLAR, SAFETY.CAT.COM, their respective logos, "Caterpillar Yellow" and the "Power Edge" trade dress, as well as corporate and product identity used herein, are trademarks of Caterpillar and may not be used without permission.

VisionLink is a trademark of Trimble Navigation Limited, registered in the United States and in other countries.

Based on the Labor, Safety and Health Laws in Japan, employer of small construction equipment are required to provide specific training for all operators on machines with ship weight less than 3 metric ton. For machines greater than 3 metric ton, operator needs to obtain operator license certification from a Government approved registered training school.

AEHQ7499-01 (08-2017)  
Replaces AEHQ7499  
(Japan)

